

Innovate with Premier®



Premier® Hygiene Products

Every procedure you perform shapes how your patients feel about you. That's why we create solutions that are engineered to deliver reliable results every day. Every time.

new! BioCoat™ - See page 1
new! Tastytooth™ - See page 8



new! BioCoat™

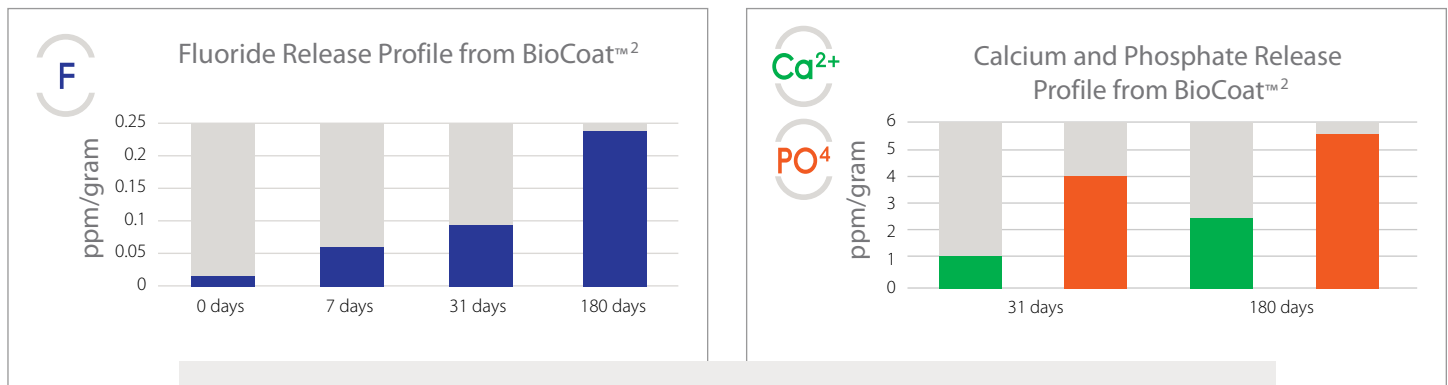
Bioactive Resin Pit & Fissure Sealant

Bioactive Release - Uptake - Recharge

Maximize your protection with BioCoat™ Bioactive Resin Pit and Fissure sealant. BioCoat with SmartCap™ Technology¹ maintains the strength and durability of a heavily filled resin sealant, while providing the benefits of extended fluoride release.

BioCoat™ is the only resin sealant with bioavailable ions

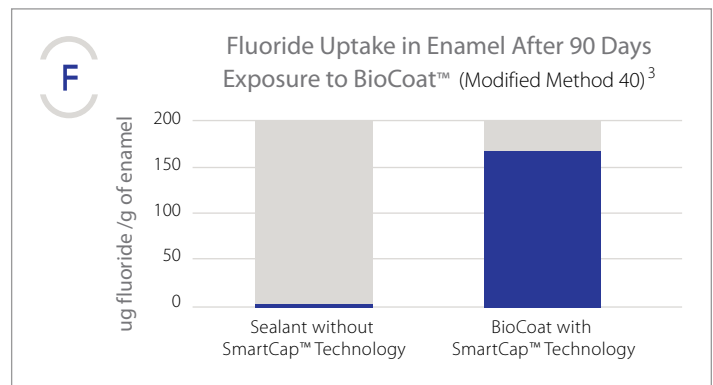
SmartCap Technology utilizes patented semi-permeable resin microcapsules filled with ionic solutions of fluoride, calcium and phosphate. The bioactive ions diffuse in and out of the sealant for long term release*.



Even after 6 months, fluoride, calcium and phosphate ion release continues at a significant rate.

Greater fluoride uptake for long-term protection

- Greater fluoride uptake in the presence of calcium and phosphate ions strengthens enamel
- Remineralization compounds seal margins against microleakage and provide an extra line of defense during acid attacks.



SmartCaps are rechargeable⁴

When exposed to normal tooth brushing with fluoridated toothpaste, SmartCap capsules have demonstrated the ability to absorb and release fluoride.

1. Bibliography available upon request. / 2. A. Kava et al. "Controlled Release of Microencapsulated Remineralizing Agents from Pit-and-Fissure Sealants" IADR poster, Boston, 2015 / 3. S. M. Gross et al. "Pit and Fissure Sealant with Ion Permeable Microcapsules Promote Fluoride Uptake in Enamel" IADR poster, Boston, 2015 / 4. B. Burbank et al. "Enhanced Release of Toothpaste Originated Fluoride from Microcapsule-Containing Dental Materials" IADR poster, Boston, 2015 / * Charts represent cumulative release data

Outstanding barrier protection

BioCoat™ is a 56% filled resin sealant providing excellent long-term resistance to wear with a compressive strength comparable to flowable composites. The resin formula is very resistant to oral solubility, a problem glass ionomer and resin filled glass ionomers sealants cannot overcome.

56% Filled & High Compressive Strength

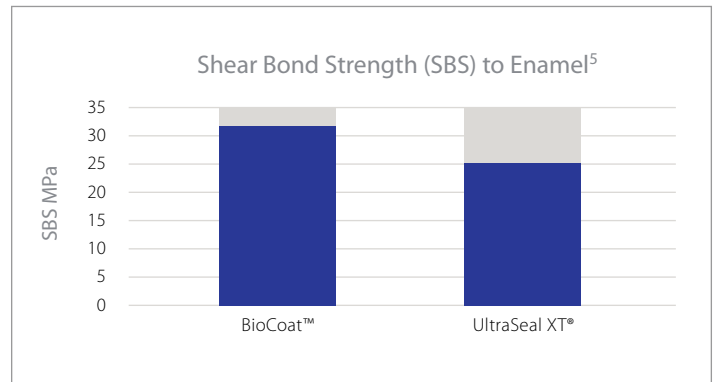
- Durable, resists cracking, chipping and fractures
- Lowers polymerization shrinkage and gap formation
- Maintains a smooth surface to avoid accumulation of plaque and debris

Excellent Flowability

- Penetrates and adapts into the smallest pits and fissures for a secure seal
- Highly retentive (Shear bond strength of 32 MPa)
- Bubble-free application

Easy to Use

- Just clean, etch, rinse and dry. While maintaining dry field, apply BioCoat and light cure.



BioCoat's impressive shear bond strength of 32MPa ensures BioCoat's retention over the years.

1+1!

Introductory offer! Each single syringe pack includes a free second syringe.

- 3001530 BioCoat Standard Pack
Contains: One 1.2ml syringe and five disposable applicator tips
Shade: White
- 3001535 BioCoat Applicator Tips
Contains: 100 disposable applicator tips

BioCoat is **not** formulated with Bisphenol A (BPA).



SmartCap Technology, developed in partnership with Creighton University, utilizes patented* semi-permeable resin microcapsules.

In BioCoat, the rechargeable SmartCap microcapsules are filled with ionic solutions of fluoride, calcium and phosphate. Tooth surfaces, both in contact and adjacent to the sealant, benefit from the extended release of these ions. The demineralization cycle is disrupted and the remineralization process is continuously supported. The exchange of ions and recharge of microcapsules extends maximum protection without putting the sealant's physical integrity at risk.

Visit www.premusa.com/biocoat for more information

*United States Patent Numbers: 9,119,774, 8,889,161, 8,735,463

5. Testing by Mark A. Latta, D.M.D., M.S., GL Materials LLC / UltraSeal XT® is not a registered trademark of Premier Dental.

Enamelon® Preventive Treatment Gel

Everyday Relief. Everyday Protection.

Treats Sensitivity, Soothes & Moisturizes Dry Mouth Tissues

- Relieves the discomfort of dry mouth tissues†
- Helps to prevent caries & gingivitis
- Non-irritating to patients with dry mouth†
- Contains no SLS, gluten or dyes
- 0.40% stabilized stannous fluoride (970 ppm F)
- Optimized with calcium and phosphate ions
- Non-abrasive formula for daily use
- Safe for patients of all ages**

**Dose based on age

Treats sensitivity

Occludes tubules with ACP & Fluoride

Dentinal hypersensitivity is under-reported by the patient.⁶ Enamelon Treatment Gel is your professionally dispensed solution.

Enamelon® contains stannous fluoride along with calcium and phosphate ions that have proven effective for tubule occlusion. By blocking the exposed tubules with a combination of stannous (tin) ions along with fluoride, calcium and phosphate salts, a physical barrier is created that covers open dentinal tubules to prevent external stimuli from causing pain or discomfort.

Soothes dry mouth tissue

Enamelon provides an immediate and long lasting soothing, moisturizing and lubricating effect.

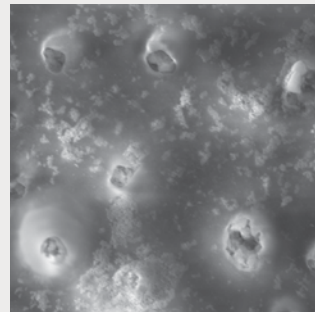
Through the use of proprietary co-polymers, Ultramulsion® benefits your patients by providing a long-lasting coating that lubricates and soothes the soft tissues of the mouth.

Enamelon is the only over-the-counter (OTC) stannous fluoride preventive treatment gel that has been shown in a clinical trial to help reduce many sensory symptoms of dry mouth.†



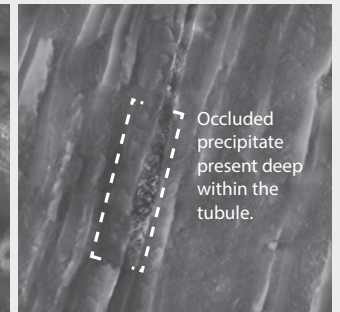
Dentin Surface Post-Treatment

Scanning Electron Micrograph (SEM) of dentinal tubules after 5 day application with Enamelon.



Longitudinal View of Treated Dentin

SEM Image of the newly occluded dentinal tubules after day 5 with Enamelon.



Enamelon® creates a physical barrier. Tubules are almost completely filled in with a precipitate of Amorphous Calcium Phosphate Fluoride.

6. Kamath Deepa G & Nayak Sangeeta U. Dentinal hypersensitivity and its management – An informed view, J.Pharm Biomed Sci. 2013, February ; 27(27):474-479. (Article no 09) / † Milleman J.L., Milleman K.R., Santos S.L., Proskin H.M., Battershell K.K., DiMarino J.C.A. Subjective Assessment of Enamelon® Preventive Treatment Gel in A Self-reported Dry-mouth Population. Compend Contin Educ Dent. 2016;37(8): E6-E10.

All patients can benefit from Enamelon

Enamelon®	Anti-Caries	Anti-Sensitivity	Anti-Gingivitis
Attrition (Bruxism)		✓	
Caries Risk based on CRA ⁹	✓		
Crown & Bridge Protection	✓	✓	✓
Dental Erosion	✓	✓	
Gastric Reflux Disease GER/GERD	✓	✓	
History of ECC ¹⁰	✓		
History of Pit & Fissure Caries	✓		
ICDAS Prevention Care ¹¹	✓		
Oncology	✓	✓	✓
Orthodontic	✓		✓
Pediatric	✓		✓
Periodontal	✓	✓	✓
Polypharmacy	✓	✓	
Pregnancy/Maternity	✓		✓
Recession	✓	✓	✓
Special Needs Patients	✓	✓	✓
Whitening/Bleaching		✓	
Xerostomia/Dry Mouth	✓	✓	✓

More protection Less fluoride^{7,8}

Enamelon provides 3x greater reduction of enamel solubility⁸

- Reduces the solubility of enamel, preventing demineralization of the tooth surface when exposed to acids.
- Decreases enamel solubility by 56.91% compared to 18.78% with 5000 ppm fluoride paste, providing 3x greater protection against acid challenges.⁸
- Provides over 2x more beneficial fluoride uptake with only one-fifth the amount contained in 5000 ppm fluoride toothpastes.⁷

Dispense with confidence!

“Patients that have tried a sensitive toothpaste and have not had any relief, we offer the Enamelon Treatment Gel for the generalized sensitivity. For our dry mouth patients, we offer the Enamelon to help aid in the relief to dry mouth tissues, as well as protect them from caries.”

- Dr. P., DMD & C. B., RDH, BS, Connecticut

9007285 Enamelon® Preventive Treatment Gel
4.0 oz (113 g), Clean Mint, 12/case

Not available in Canada.

7. Schemehorn BR, DiMarino JC, Movahed N. Comparison of the Incipient Lesion Enamel Fluoride Uptake from Various Prescription and OTC Fluoride Toothpastes and Gels. Journal of Clinical Dentistry, 2014; 25:57-60 / 8. Schemehorn BR, DiMarino JC, Movahed N. Comparison of the Enamel Solubility Reduction from Various Prescription and OTC Fluoride Toothpastes and Gels. Journal of Clinical Dentistry, 2014; 25:61-64. / 9. CRA=Caries Risk Assessment curriculum. (ADA, AAPD, CAMBRA, etc) / 10. Early Childhood Caries is defined as the presence of one or more decayed (non-cavitated or cavitated lesions), missing (due to caries) or filled tooth surfaces in any primary tooth in a preschool-age child between birth and 71 months of age. The term "Severe Early Childhood Caries" refers to "atypical" or "progressive" or "acute" or "rampant" patterns of dental caries. - ADA Statement on Early Childhood Caries. www.ada.org/2057.aspx / 11. ICDAS (International Caries Detection and Assessment System) is detection and assessment system classifying states of the caries process. www.icdas.org



Enamelon®

Fluoride Toothpaste

0.45% Stannous Fluoride (1150 ppm F)



Enamelon® Toothpaste contains the same clinically proven active ingredient optimized with calcium and phosphate ions as the preventive treatment gel, but in an 1150 ppm F formulation with a low abrasive for everyday use.

- Aids in the prevention of cavities
- Builds increasing protection against painful sensitivity of the teeth to cold, heat, acids, sweets or contact
- Helps to prevent gingivitis
- Helps to interfere with the harmful effects of plaque associated with gingivitis
- Delivers more fluoride uptake to the teeth^{7,21}
- Strengthens teeth better than the 5000 ppm F toothpastes⁷
- Promotes remineralization and inhibits demineralization
- Soothes and moisturizes discomfort associated with dry mouth tissues
- Low-abrasive toothpaste (RDA of 39)
- Contains no SLS, gluten or dyes

9007280 Enamelon® Toothpaste
4.3 oz (122 g)
Mint Breeze, 12/case

9007290 Enamelon® Toothpaste
0.75 oz (21.2 g)
Mint Breeze, 24/case

Not available in Canada.

Science Defined

Amorphous Calcium Phosphate (ACP) -

Building blocks of tooth mineral^{12,13,14,15}



The most reactive and soluble calcium phosphate compound, ACP forms on the tooth enamel, within the dentinal tubules and provides a calcium and phosphate reservoir. Research shows that available ACP on the enamel can prevent damaging erosion by stimulating remineralization of tooth structure.^{16,17,18} Introducing calcium and phosphate back into the surface of the tooth with products containing ACP technology is an ideal strategy to reverse the demineralization process.

The ACP-forming ingredients also strengthen teeth by acting as an enhanced fluoride delivery system to deliver more fluoride than products without ACP.²² The patient has the benefit of fluoride uptake without greater exposure to higher fluoride concentrations or volumes. ACP combines with fluoride to desensitize dentin. Fluoride, along with ACP, occludes tubules by depositing tooth-like minerals to create a semi-permanent reduction in hydraulic conductance. This is a proven mechanism to reduce dentinal hypersensitivity.

Value of Fluoride Sources

Fluoride reacts with tooth mineral, forming either fluoridated apatite (firmly-bound) or calcium fluoride (loosely-bound).

Firmly-bound fluoride, incorporated onto the surface of the crystals of apatite, can reduce the solubility of tooth mineral and hence inhibit demineralization due to acids generated by plaque bacteria.¹⁶

Loosely-bound (labile F) fluoride provides a relatively slow-release form of ionic fluoride to plaque and saliva.¹⁷ There has been renewed interest in loosely-bound fluoride as a reaction product of fluoridation to act as a potential “reservoir” source of solution fluoride enhancing remineralization and retarding demineralization processes.¹⁷





Enamel Pro® Prophy Paste

The **ONLY** prophy paste formulated to deliver ACP
Strengthen their smiles!

Enamel Pro® offers innovative remineralizing technology through Amorphous Calcium Phosphate (ACP).¹⁸

- Enamel Pro prophy paste delivers 31% more fluoride uptake into the enamel than prophy paste without ACP¹⁹
- Provide a true benefit to your patients while your prophy provides a lustrous smile
- Gluten-free

	Fine	Medium	Coarse
new! Mixed Berry	9007630	9007627	9007631
new! ChocHazelnut	9007628	9007632	9007633
Mint**	9007600	9007601	9007602
Bubblegum	9007614	9007615	9007616
Cinnamon	9007604	9007605	9007606
Grape	9007610	9007611	9007612
RaspberryMint	9007620	9007621	9007622
Strawberry	9007607	9007608	9007609
VanillaMint	9007617	9007618	9007619
Mint (no fluoride)			9007613

**Also available in Mint Extra Coarse 9007603

Each box of Enamel Pro® contains 200 single-use cups, packaged in a foil bag and a Comfy-Grip™ prophy cup holder.

9007650 Comfy-grip™ cup holder (3)

Intense Polish & Shine

Greater luster for whiter, brighter teeth^{15,20}
Zygo® non-contact profilometry intensity map profiles

Enamel surface before prophy polishing

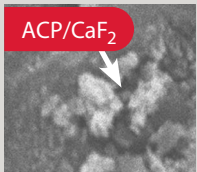
After prophy polishing with leading prophy paste

After prophy polishing with Enamel Pro®

¹² Tung, M.S., Eichmiller, F.C., Paffenberger Research Center. ADAHF. NIST. Gaithersburg, MD. "Dental Applications of Amorphous Calcium Phosphates" Journal of Clinical Dentistry, Vol.10, Issue 1, 1999. / ¹³ Tung, M.S., Eichmiller, F.C. "ACP for Tooth Mineralization", Compendium Cont. Educ Dent, Vol 25, No. 9, Suppl. 1, Sept. 2004, p 9-13. Journal Code 9600713, Journal Subset MEDJSD, ISSN 1548-8578. Corp. Author: American Dental Association Foundation. / ¹⁴ Tung, M., Eichmiller, F., Gibson, H., Ly, A., Skrtic, D., Schumacher, G., (ADAHF Paffenberger Research Center, NIST, Gaithersburg, MD), "Dentin Desensitization by in situ Formation of Calcium Phosphate", J. Dent Res 76 (IADR Abstracts):2985, 1997 / ¹⁵ Tung, M.S., O'Farrell, T.J., Liu, D.W., Paffenberger Research Center. ADAHF. NIST. Gaithersburg, MD. "Remineralization by Amorphous Calcium Phosphate Compounds" Journal of Dental Research, Vol. 72, Abstract No. 1738, 1993. / ¹⁶ Schemehorn, B.R., Wood, G.D., McHale, W., Winston, A.E., "Comparison of Fluoride Uptake into Tooth Enamel from Two Fluoride Varnishes Containing Different Calcium Phosphate Sources", J Clin Dent, 2011;22:51-54. / ¹⁷ White, DJ and Nancollas, G.H. "Physical and Chemical Considerations of the role of firmly and loosely bound fluoride in caries prevention", J Dent Res., 1990, 69:587-594. / ¹⁸ Tung, M.S., Malerman, R., Huang, S. and McHale, W.A. "Reactivity of Prophylaxis Paste Containing Calcium, Phosphate and Fluoride Salts", Journal of Dental Research, Vol. 84, Special Issue A, IADR Abstracts, 2005. / ¹⁹ Source: "Final Report: Enamel Fluoride Uptake Study #05-106, Modified FDA Method #40," Dental Products Testing, Indiana University Emerging Technologies Center, December 2005. / ²⁰ Winston, A.E., Charig, A., Patel, V., McHale, W.A. and Malerman, R. "Effect of Prophy Pastes on Surface of Tooth Enamel", Journal of Dental Research, Vol. 84, Special Issue A, IADR Abstracts, 2005. ²¹ Schemehorn, B.R., Orban, J.C., Wood, G.D., et al. Remineralization by Fluoride Enhanced with Calcium and Phosphate Ingredients, Journal of Clinical Dentistry, 1999; 10(1 spec. no.):13-16.

*Zygo is not a registered trademark of Premier Dental Products Company.
*ARM & HAMMER is a registered Trademark of Church & Dwight Company.





Amorphous calcium phosphate and calcium-fluoride mineral on dentin surface and in tubules

Enamel Pro Varnish offers a nice esthetic appearance, is patient pleasing and has studies supporting fluoride uptake, fluoride release and diminished hydraulic conductance.^{16,22,23}

5% NaF Varnish

Box of 35

- 9007540 Strawberries 'n Cream 0.40ml
- 9007541 Bubblegum 0.40ml
- 9007547 VanillaMint 0.40ml
- 9007542 Bubblegum 0.25ml

Box of 200

- 9007543 Strawberries 'n Cream 0.40ml
- 9007544 Bubblegum 0.40ml
- 9007545 VanillaMint 0.40ml

Each box contains single-unit doses and an applicator brush, post-application patient care instructions and doctor's directions for use.

VanillaMint is not available in Canada.



"Outstanding Products"^{16,24}

*An independent non-profit dental education and product testing foundation, December 2006

Enamel Pro Tutorials!

Go to www.premusa.com to view online tutorials!

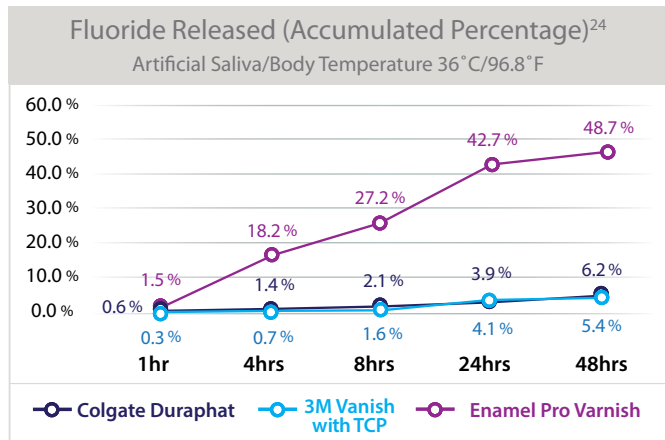
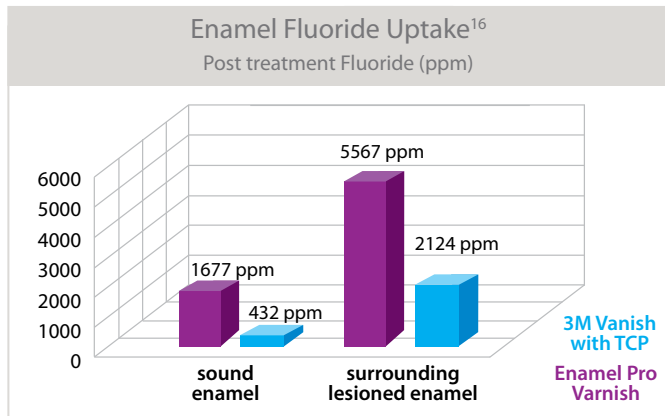
Enamel Pro® Varnish
Fluoride Varnish



First advanced fluoride varnish optimized to provide valuable tooth building ions of calcium and phosphate. Designed to create substantive forms of CaF₂ and ACP.

Indications for Use

Enamel Pro® Varnish is a fluoride containing preparation for the treatment of dentinal hypersensitivity, and for the reduction of post operative sensitivity. Independent studies show Enamel Pro Varnish delivers more enamel fluoride uptake and greater fluoride release than 3M Vanish[†].^{16,24}



In a study evaluating incubation conditions on fluoride release in vitro, Enamel Pro Varnish displayed greater fluoride release than both 3M Vanish and Colgate Duraphat.²⁴

new! Tastytooth™ 5% Sodium Fluoride Varnish

Put a smile on your patient's face with Tastytooth varnish. Create a satisfying experience with our high-impact flavors, featuring a blend of xylitol and sucralose. Our silky smooth formula is easy to apply, affordably designed and gluten-free.

Tastytooth – our name says it all!

Contents: 100 (0.5mL) single-dose, 100 applicator brushes and Directions for Use.

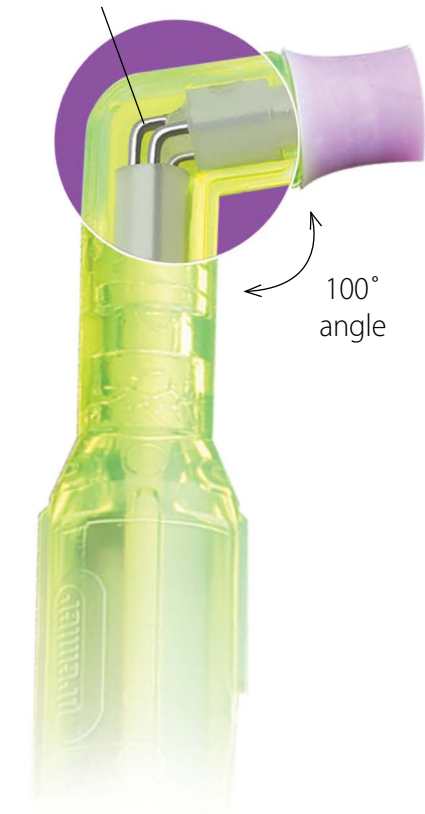
9007580 Caramel
9007581 Melon
9007582 Bubblegum

Post-treatment patient care instructions are available for download at www.premusa.com



22. Source: "Final Report: Enamel Fluoride Uptake Study #08-151, Modified FDA Method #40V", Dental Products Testing, Therametric Technologies, Inc., Indiana University Emerging Technologies Center, March 2008. / 23. "Effect of Calcium Phosphate Containing Fluoride Varnish on Dentin Permeability", Tung, M.S., Torres, J., (ADAHF Paffenbarger Research Center, NIST, Gaithersburg, MD and U.S. Navy Dental Corps, Bethesda, MD), J Dent Res 86 (Spec Iss A): 0985, 2008 (www.dentalresearch.org) / 24. Fluoride Release from Fluoride Varnishes is Affected by Incubation Conditions C. Gonzalez-Cabezas, S.E.Flannagan, R. Krell, M. Uekihara, and C.C. Niquette, Dent Res 91(Spec Iss A):1094, 2012 (www.dentalresearch.org). / t3M Vanish and Colgate Duraphat are not trademarks of Premier Dental Products Company.

Patented gearless design



100° angle

2pro®

Total Access Disposable Prophy Angle

Saves time and money

Comparably priced to other angles, yet when needed, you save time and money by removing the cup to clean remaining areas with 2pro's gentle tip

Provides total access

2pro's unique 2-in-1 design guarantees total access to all tooth surfaces

Runs smoothly and quietly

Patented gearless design ensures quiet, smooth-running, vibration-free operation with less heat build-up

Easier access to lingual areas

Ergonomic 100° design offers comfort and convenience by reaching all areas of the mouth

Latex free

	Bag of 144	Bulk Package (1,000 angles)
Soft/Short Cup	5500101	5510001 (purple cup)
Firm/Short Cup	5500102	5510002 (blue cup)
Soft/Long Cup	5500103	5510003 (white cup)
Firm/Long Cup	5500104	5510004 (green cup)

Order through your authorized dealer.



Top Prophy Angle
2013, 2014 & 2015



Top Hygiene Product for 2011



Soft/short purple cup, short tip

Firm/short blue cup, short tip

Soft/long white cup, long tip

Firm/long green cup, long tip

Get Total Access!

2pro cleans and polishes all tooth surfaces with its unique cup and tip design!

No added expense for tips or brushes!

Use the cup to polish all tooth surfaces. Use the tip for gingival and proximal areas, occlusal surfaces, veneer margins, around implants and orthodontic brackets.

“ I absolutely love the Premier® 2pro® total access soft disposable prophyl angle. The cup shape reduces splatter and is easy to use. Being able to remove the cup and use the rubber point is great. This allows access around the orthodontic brackets and wires. ”

- Sandra B., RDH, Pennsylvania

Cup On

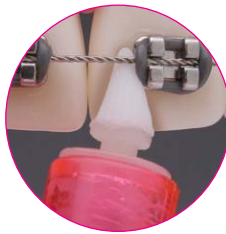


Facial surfaces

Cup Off



Veneer margins



Orthodontic brackets



Gingival/proximal





Perfecta® Bravó® 9% Hydrogen Peroxide

Only 30 minutes, once a day!

Patented water-based formulation hydrates teeth as they whiten to avoid sensitivity.

4000092 Bravó Patient Pak
Complete 2-week patient treatment. Contains 4 - 3cc syringes with tray case and tray material in cosmetic patient pouch.

4000094 Bravó 50 Pak
Contains 50 - 3cc syringes. You add trays and tray cases.

4000091 Bravó Touch-Up Pak
Contains 1 - 3cc syringe.

Not available in Canada.



PRÉMA® Enamel Microabrasion System



Ideal for treatment of superficial white, brown and multi-colored enamel defects that are less than 0.2mm in depth.

9008010 PRÉMA Enamel Microabrasion System
Includes four 1.2ml syringes, 20 syringe tips, 20 polishing cups, 4 mandrels and doctor's directions for use.



Perfecta® REV!® 14% Hydrogen Peroxide

Only 15 minutes, once a day!

The ideal combination for compliance - short wear time and less sensitivity.

- REV! delivers short wear time - 1/4 the time of the leading strips.^{32,33}
- Less Sensitivity - 66% less sensitivity than the leading strips^{32,33}
- Superior Whitening - Patented technology with proven results³²

REV! Finishing Rinse

- Specially buffered formula immediately accelerates the breakdown of the gel into its active components, providing an added boost to the final whitening effect.
- Rinsing effect safely removes residual gel from teeth and any soft tissue.
- Contains an advanced form of highly stable Vitamin C which is known to protect soft tissue from any available free radicals and is known to promote healthy teeth and gingiva.
- Contains Pentasodium Triphosphate, a sequestering ingredient that helps to "lift and remove" enamel stain.
- Alcohol-free, cool mint flavor which leaves the mouth clean and refreshed after every treatment.

Suggest a REV! Refresher for all your previous whitening patients. Get them back to your office and keep them smiling white.

4000142 REV! Six Patient Paks
Each Patient Pak is a complete 2-week treatment. Contains 2 - 3cc syringes with 4oz (118.3ml) REV! finishing rinse. You add trays and tray cases.

4000141 REV! Six Refresher Paks
Ideal for touch-ups. Contains 1 - 3cc syringe with 4oz (118.3ml) REV! finishing rinse. You add trays and tray cases.

Available individually through dealer. Not available in Canada.

Perfecta® Carbamide Peroxide

Perfecta 16%

Can remove a full range of stains including those resulting from tobacco, dark beverages and even tetracycline. Wear time can be adjusted for light stains and for those patients with a history of thermal sensitivity.

Perfecta 21%

Tetracycline stains, fluorosis. Dispense only to compliant patients with no history of thermal sensitivity.



Not available in Canada.

Perfecta®

Perfecta® carbamide peroxide gels are formulated with a predominantly glycol base for minimal dehydration and sensitivity.

Perfecta Patient Pak

Complete 2-week patient treatment. Contains 6 - 3cc syringes with dispensing tips, tray case, tray material, patient instructions, doctor's instructions, and cosmetic patient pouch.

	Unflavored	Mint
16%	4000161	4000162
21%	4000211	4000212

Perfecta 50 Pak

Contains 50 - 3cc syringes with dispensing tips, 8 patient instructions, 25 prescription bags, doctor's instructions.

	Unflavored	Mint
16%	4004160	4004165
21%	4004210	4004215

Accessories

4008311	Tray Cases (24 Pearl White)
4008305	.040" Tray Material, 5 x 5" (25)
4008300	Perfecta Block-Out Resin

Standard Tubes 2-arch supply per tube

A tremendous value with 2 ounces (59cc) of whitening gel in a squeeze tube. Ideal for long-term cases (tetracycline).

4007115	11% Standard Tube	(Mint)
4007165	16% Standard Tube	(Mint)
4007215	21% Standard Tube	(Mint)

ALFA™ Triple Tray®

Full-arch Alginate Impression Making

Ideal for whitening trays - one step, two impressions!

Box of 24

Small	1006313	Large	1006333
Medium	1006323	Assorted	1006343



Tray Magic™ Soft Tray Trimmer

Custom Trays - Quickly and Easily
No scissors - no grinding

110V 4008200

Not available in Canada.



In-Office Tooth Whitening

Perfection White™

35% Hydrogen Peroxide Whitening

Four-Patient Kit 4008104



32. Clinical Evaluation of Bleaching Efficacy of Two Different Systems, Sheila Koh, D.D.S., F.A.G.D. University of Texas Health Science Center at Houston - Dental Branch, December 2004. / 33. Crest® Whitestrips® Supreme

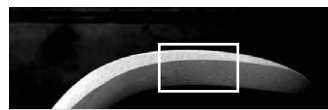


Premier® **SmartSharp**® Technology

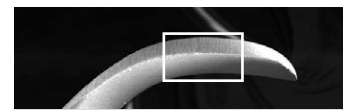
Premier's innovation in sharpening technology allows you to start sharp and work smart:

- Easily maintain sharpness – proprietary process ensures a well defined edge you can easily re-sharpen as needed – to maintain efficiency
- Apply less pressure and use fewer strokes – achieve a glass-like tooth surface – more easily
- SmartSharp® now available on Premier Scalers and Curettes – at no additional cost - on your choice of ergonomic handles - made in the U.S.A. with 100 years experience

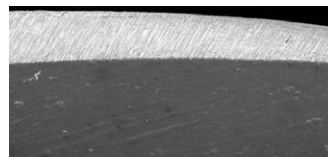
CE



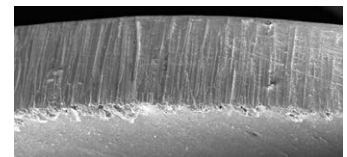
Premier® Instrument Edge



Leading Competitor Edge



A sharp edge ensures a smooth, precise cut with less hand fatigue.



An irregular edge is less efficient and can lead to more hand fatigue.

Sickle



Wil 8 • BEUL-05681 • BE-1005130 • LT-1004877



H6/H7 • BEUL-05621 • BE-1005040 • LT-1004839 • LTO-1004589



H5/33 • BEUL-05629 • BE-1005060 • LT-1004838 • LTO-1004588



U15/30 • BEUL-05631 • BE-1005065 • LT-1004842 • LTO-1004592



U15/33 • BEUL-05633 • BE-1005070 • LT-1004843 • LTO-1004593



Nebraska 128 • BEUL-05680 • BE-1005125 • LT-1004876



Morse 0/00 • BEUL-05695 • BE-1005855 • LT-1004855



NV1 Anterior • BEUL-05690 • BE-1005850 • LT-1004850



NV2 Posterior • BEUL-05691 • BE-1005851 • LT-1004851



NV4 • BEUL-05684 • BE-1005854 • LT-1004854



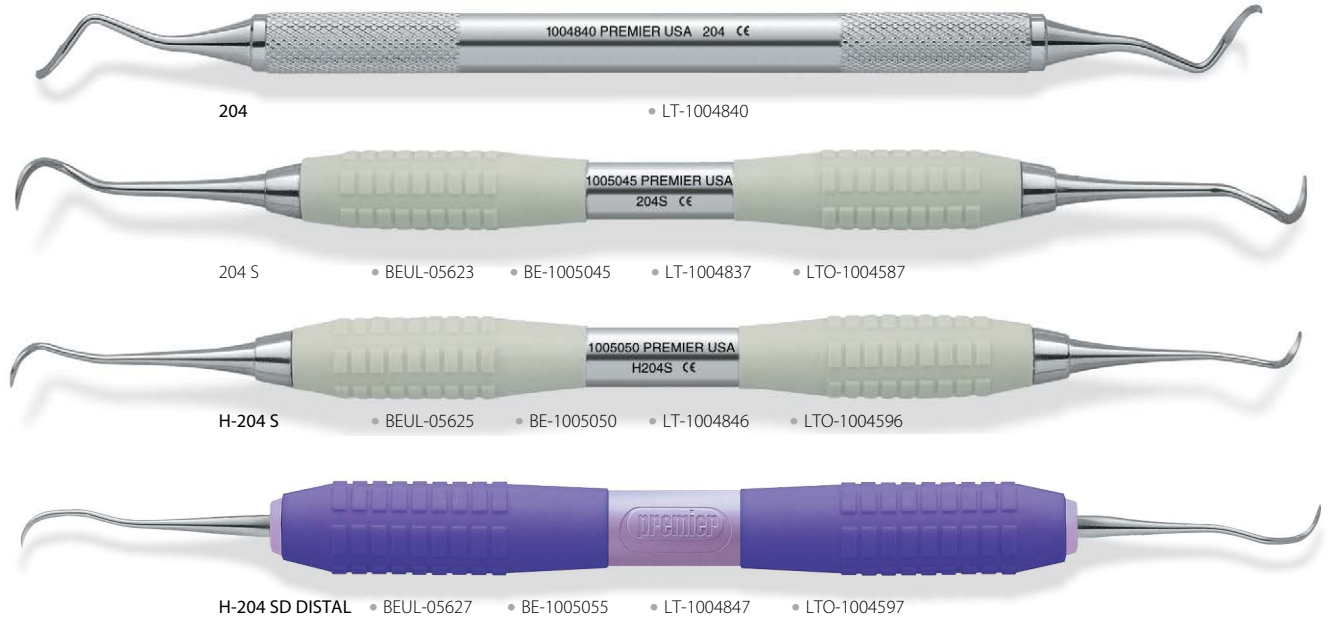
135 • BEUL-05694 • BE-1005853 • LT-1004853



137 • BEUL-05692 • BE-1005852 • LT-1004852



204 Series



Jacquette



Cattoni





Columbia



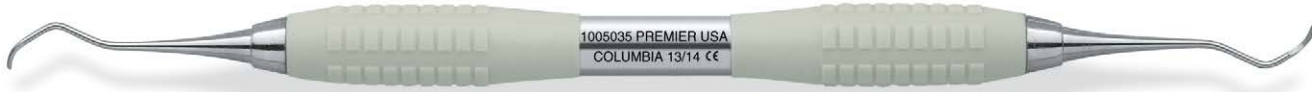
Columbia 2L/2R • BE-1005028 • LT-1004800



Columbia 4L/4R • BEUL-05615 • BE-1005030 • LT-1004801



Universal Implant Scaler (Columbia 4L/4R) 2 pack • 9061401
5 pack • 9061400



Columbia 13/14 • BEUL-05617 • BE-1005035 • LT-1004802 • LTO-1004552

McCall



McCall 13/14 • BEUL-05635 • BE-1005075 • LT-1004823



McCall 13S/14S • BEUL-05639 • BE-1005085 • LT-1004821 • LTO-1004571



McCall 17/18 • BEUL-05637 • BE-1005080 • LT-1004824



McCall 17S/18S • BEUL-05641 • BE-1005090 • LT-1004822 • LTO-1004572

Younger-Good



Younger-Good 7/8 • LT-1004875



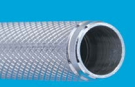
H Younger-Good 7/8 • BEUL-05693



Big Easy®
Ultralite™ (BEUL)
1/2" diam., 16g



Big Easy® (BE)
7/16" diam.
23g



Light Touch™
Round (LT)
5/16" diam.
21g



Light Touch™
Octagon (LTO)
1/4" diam.
18g

Gracey



Gracey 1/2 • BEUL-05601 • BE-1005001 • LT-1004810 • LTO-1004560
Short shank for incisors and cuspids



Gracey 3/4 • BEUL-05603 • BE-1005005 • LT-1004811 • LTO-1004561
Short contra-angle shank for incisors and cuspids



Gracey 5/6 • BEUL-05605 • BE-1005010 • LT-1004812 • LTO-1004562
Medium shank for cuspids and molars



Gracey 7/8 • BEUL-05607 • BE-1005015 • LT-1004813 • LTO-1004563
Medium contra-angle shank for bicuspid and molars, buccal and lingual surfaces



Gracey 9/10 • BEUL-05609 • BE-1005018 • LT-1004814
Long contra-angled for molars with more acute blade angle



Gracey 11/12 • BEUL-05611 • BE-1005020 • LT-1004815 • LTO-1004565
Triple angulation for easy access to buccal/mesial and lingual/mesial surfaces of premolars and molars



Gracey 13/14 • BEUL-05613 • BE-1005025 • LT-1004816 • LTO-1004566
Triple angulation for easy access to distal/posterior surfaces of premolars and molars



Gracey 11/14 • LT-1004817
For easy access to a facial or lingual sextant with a single instrument.



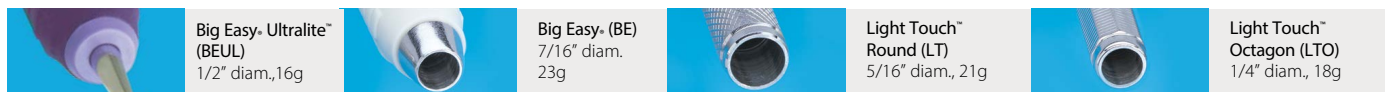
Gracey 12/13 • LT-1004818
For easy access to a facial or lingual sextant with a single instrument.



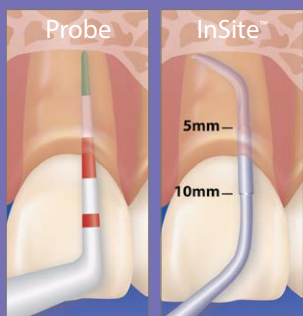
Gracey 15/16 • BEUL-05653 • BE-1005026 • LT-1004819 • LTO-1004569
Angled shank, designed to reach mesial surfaces of posterior teeth



Gracey 17/18 • BEUL-05655 • BE-1005027 • LT-1004820 • LTO-1004570
Highly angled shank for reaching distal surfaces of posterior teeth



Gracey						InSite Pocket Scalers					InSite Mini Pocket Scalers	
Gracey	BEUL	BE	LT	LTO	Rigid LT	Gracey	BEUL PS	BE PS	LT PS	BEUL MPS	BE MPS	LT MPS
1/2	05601	1005001	1004810	1004560	1004790	1/2	05660	—	1004880	05670	1005211	1004894
3/4	05603	1005005	1004811	1004561	1004791	3/4	05661	1005202	1004881	05671	1005212	—
5/6	05605	1005010	1004812	1004562	1004792	5/6	05662	1005203	1004883	05672	1005213	1004896
7/8	05607	1005015	1004813	1004563	1004793	7/8	05663	1005204	1004886	05673	1005214	1004897
9/10	05609	1005018	1004814	—	1004794	9/10	—	—	—	—	—	—
11/12	05611	1005020	1004815	1004565	1004795	11/12	05665	1005205	1004890	05675	1005215	1004899
11/14	—	—	1004817	—	—	11/14	—	—	—	—	—	—
12/13	—	—	1004818	—	—	12/13	—	—	—	—	—	—
13/14	05613	1005025	1004816	1004566	1004796	13/14	05666	1005208	1004892	05676	—	—
15/16	05653	1005026	1004819	1004569	1004797	15/16	05667	—	—	05677	—	1004906
17/18	05655	1005027	1004820	1004570	1004798	17/18	—	—	—	—	—	—



Gracey Variations

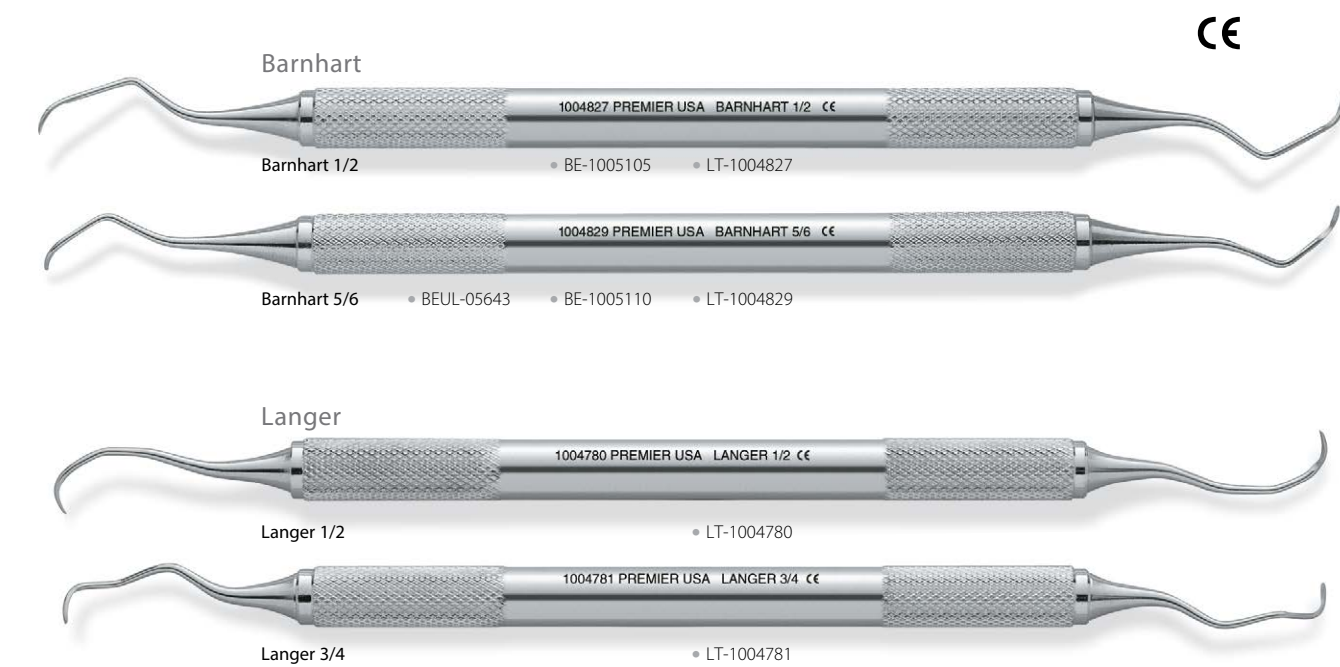
Pocket Scalers (PS) and Mini Pocket Scalers (MPS) have a slender and longer terminal shank to provide access into deeper pockets. MPS has the same slender tip design as PS, but with half the blade length. InSite PS and MPS have a depth gauge at 5mm through 10mm offering an excellent visual guide.

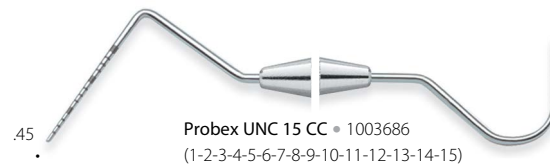
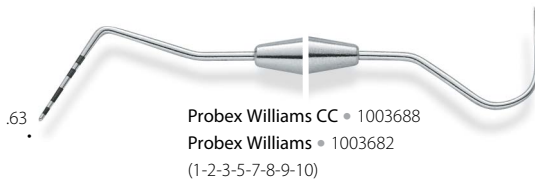
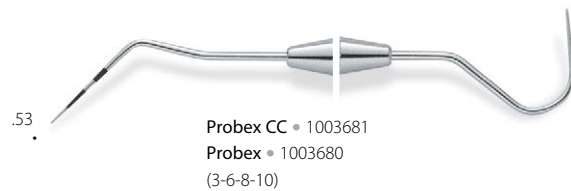
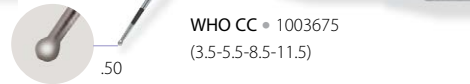
Big Easy Ultralite Pocket Scalers (PS) and Mini Pocket Scalers (MPS) do NOT feature the depth gauge found in InSite Scalers

Rigid Gracey designs have a thicker shank than the original Gracays, but are overall slightly shorter for increased strength when removing heavy calculus.



BEUL PS BEUL MPS InSite PS InSite MPS Gracey Rigid



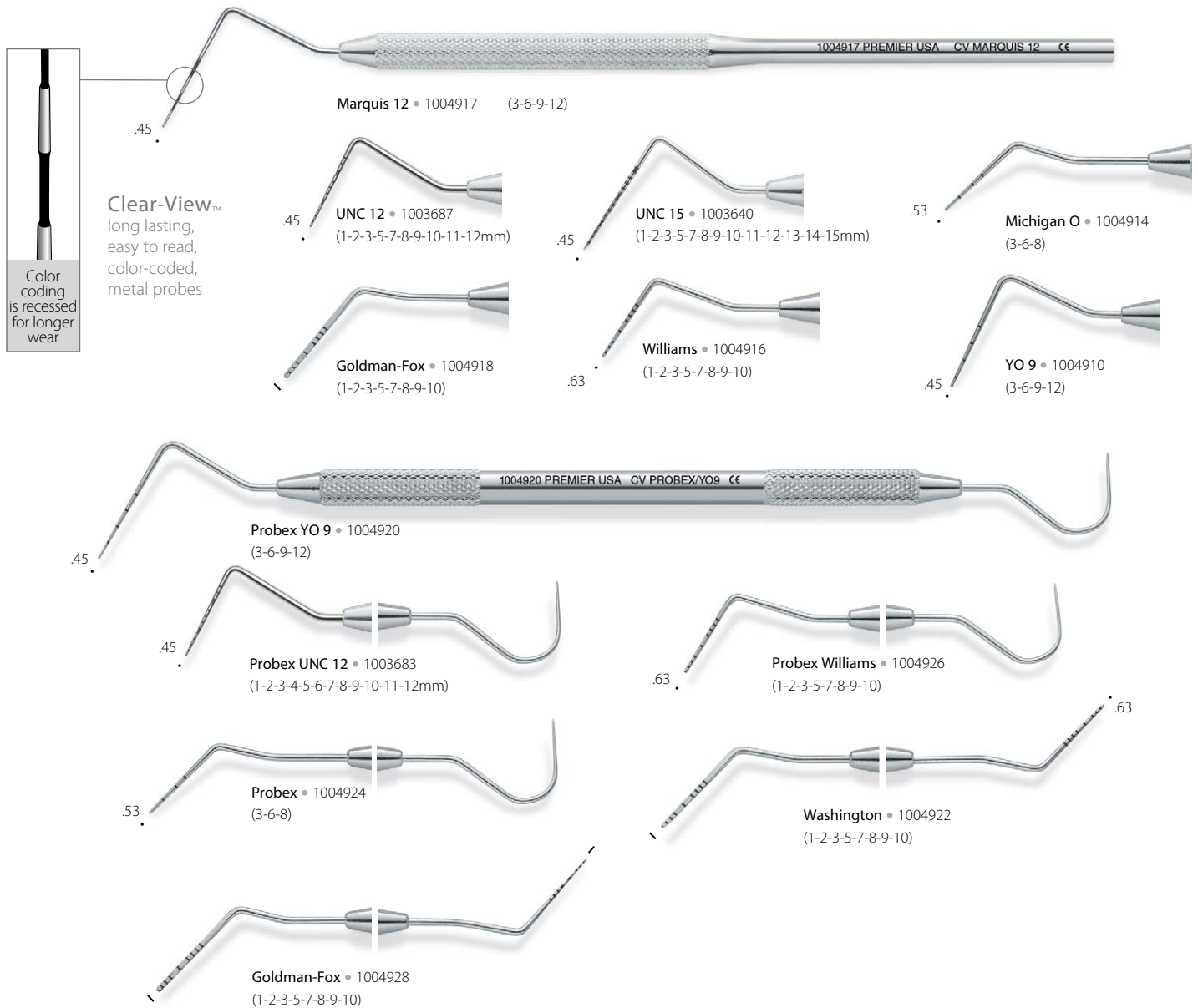


Tip diameter measurements in millimeters. CC indicates color coding.

ComfortView® Lip & Cheek Retractor

- Retracts lips and cheeks for optimal buccal and gingival access
- Maximum visibility and patient comfort
- Suitable for use in diagnostic, preventative, therapeutic dental applications, in-office whitening, digital impression scanning and intra-oral photography
- Autoclavable, latex free

9061381 Universal ComfortView Lip and Cheek Retractor - 2 per box (white)
 9061383 Small ComfortView Lip and Cheek Retractor - 2 per box (blue)
 9061382 ComfortView Refill Cushions -10 per pack



Tip diameter measurements in millimeters.



CF 6 • 1003512

CF 6XT • 1003116

OCT 6 • 1003492



CF 6L • 1003513



CF 6L-H • 1003511



CF 17 • 1003514



CF 23 • 1003515

CF 23XT • 1003118

OCT 23 • 1003495

CF 23 12-PK • 1003962

Cavity Finder™ Explorer

- Improved tactile sensitivity via multi-piece construction
- Thin, yet sharp and durable tips



CF 2 • 1003522

CF 2XT • 1003119

OCT 2 • 1003502

CF 2 12-PK • 1003963



CF 2CH • 1003528



CF 3CH • 1003527

CF 3CH 12-PK • 1003965



CF 5 • 1003523

CF 5 12-PK • 1003964

CF 5XT • 1003120

OCT 5 • 1003503



CF 6 • 1003524

OCT 6 • 1003504



CF 6/23 • 1003526

OCT 6/23 • 1003506



CF 11/12 • 1003529



CF TU 17/23 • 1003509



CF ODH 11/12 • 1003549

Mirror Handles



Cone Socket with Big Easy® Handle • 1005115



Cone Socket • 1003582



Simple Stem with Big Easy® Handle • 1005120



Simple Stem • 1003581

Big Easy® Ultrasonic Inserts Big Easy cushion-grip ultrasonic inserts for improved ergonomic grip and comfort.

- Ergonomically designed large 7/16" diameter for maximum comfort and decreased fatigue
- Compatible with most magnetostrictive handpieces



Big Easy Ultrasonic Inserts - #10 Universal • 25K-1005300 • 30K-1005310



Big Easy Ultrasonic Inserts - #1000 Triple Bend • 25K-1005305 • 30K-1005315



Big Easy Ultrasonic Inserts - #100 Thin-tip • 25K-1005320 • 30K-1005330



"P" Style Inserts (External Flow)

- | | | |
|-------------|--------------------|---------------|
| P 50 | • 25K-1006803 | • 30K-1006903 |
| P 100 - 25K | • Straight-1006801 | |
| P 100 - 30K | • Straight-1006902 | |



Big Easy Implant Ultrasonic Inserts • 25K-1005326 • 30K-1005336

- Permanently attached PEEK tip will not scratch implants
- PEEK is considered an advanced biomaterial used in medical implants.
- PEEK is non-abrasive and proven robust for long-lasting insert tips.
- Effectively removes biofilm and calculus



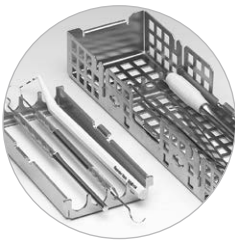
Resin Handle Ultrasonic Insert - #10 Universal • 25K-1006800 • 30K-1006900



Resin Handle Ultrasonic Insert - #1000 Triple Bend • 25K-1006802 • 30K-1006901



Resin Handle Ultrasonic Insert - #100 Thin-tip • 25K-1006820 • 30K-1006920



Instrument Cassettes Stainless Steel

- Proven reliability & quality performance
- Unique, hingeless design
- Compact, double-stack feature

- 9010904 Mark I (4 or 8 instruments)
- 9010908 Mark VI (8 or 16 instruments)
- 9010924 Mark IV (12 or 24 instruments)
- 9010901 Accessory Cassette



CE Premier PerioWise® "The Friendly Probe"*

- Slightly flexible for greater patient comfort.
- Clearly visible when using intra-oral camera.



Original 3-5-7-10mm • 9006107 (3-pack) • 9006102 (6-pack) • 9006105 (12-pack)

"Most Highly Rated"*



3-6-9-12mm • 9006108 (3-pack) • 9006104 (6-pack) • 9006106 (12-pack)

* An independent non-profit dental education and product testing foundation - January 2001./**. "A Patient-Centered Approach to Periodontal Disease Detection." JOURNAL OF PRACTICAL HYGIENE; Vol. 8, Number 3; May/June 1999.



www.periowise.com



FREE screening system components available from Premier!

A Fast and Accurate Screening System**

The patient Screening Report helps with patient education and compliance.

- Ideal for full examination or a quick screening
- Easy-to-read 3mm green band indicates periodontal health
- Reaching a red mark indicates the possible presence of periodontal disease
- Safe around implants
- Autoclavable

Premier PerioWise® UNC12 "The Friendly Probe"*

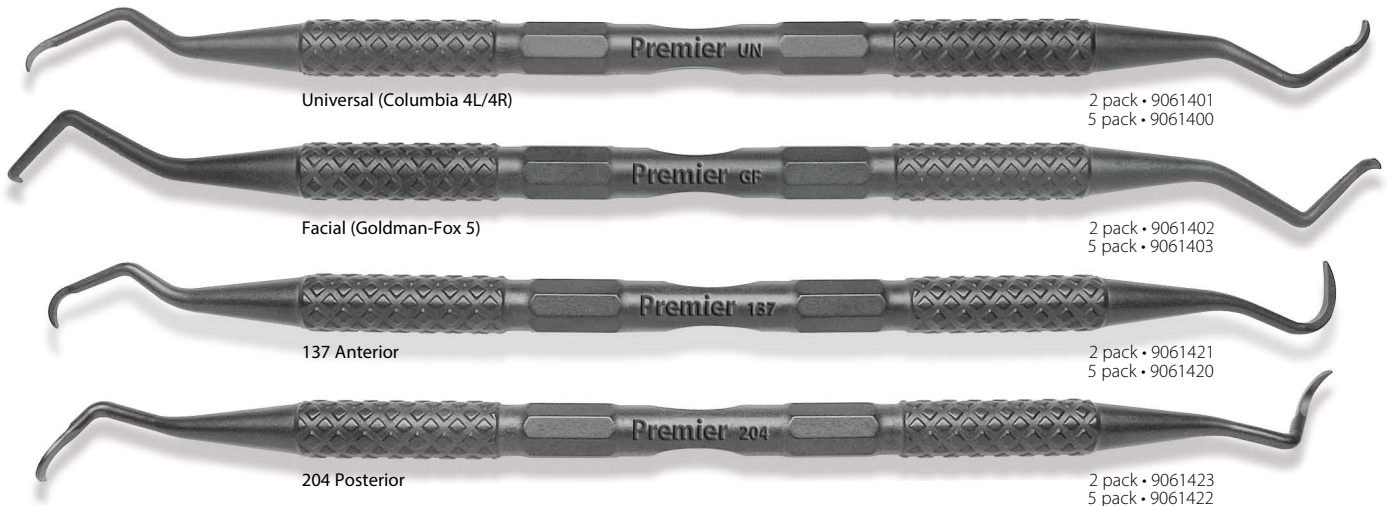
- Provides precision measuring of pocket depths with markings indicating 1mm increments up to 12mm.
- Ideal for complete periodontal examinations and intraoral measurements.



UNC 12 • 9006120 (3-pack) • 9006121 (6-pack) • 9006122 (12-pack)

Implant Scalers

- Thin, slightly flexible and safe for use on implants.
- Autoclavable (273°F/134°C).



Universal (Columbia 4L/4R)

2 pack • 9061401
5 pack • 9061400

Facial (Goldman-Fox 5)

2 pack • 9061402
5 pack • 9061403

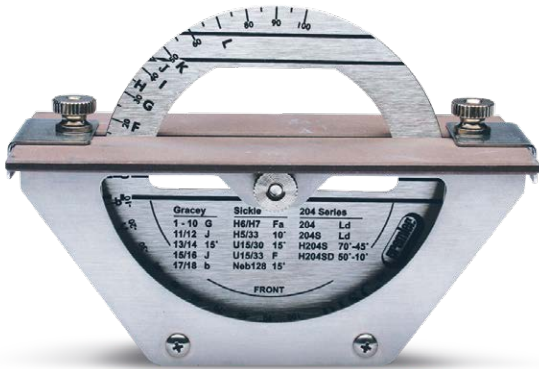
137 Anterior

2 pack • 9061421
5 pack • 9061420

204 Posterior

2 pack • 9061423
5 pack • 9061422

The Cutting Edge in Precision Sharpening



Autoclavable D.I.S.C.™ **CE** Instrument Sharpening System

- Simplifies sharpening
- Easy-to-use
- Quick and accurate
- No damage to cutting surface



9048200 Autoclavable D.I.S.C. complete with (2) sharpening stones and Comprehensive Guide to Sharpening

9048093 Sharpening Stone (1)

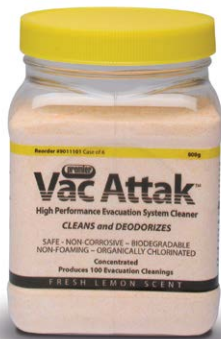
To view the D.I.S.C. tutorial, go to www.premusa.com



VACU BLAST™ **CE** Liquid Evacuation System Cleaner

- Powerful enzymatic cleaner
- Compatible for all amalgam separators
- Non-foaming
- Phosphate- and chlorine-free
- Can be used with or without an atomizer
- Safe on all evacuation systems and plumbing
- Environmentally friendly
- Refreshingly clean eucalyptus scent
- Easy, economical metered-dose packaging
- 64 cleanings per 32oz bottle

9011107 12, 32oz bottles



Vac Attak™ **CE** Evacuation System Cleaner

- Especially effective on prophy paste & fluoride gels
- Fast-acting
- Safe and environmentally friendly
- Economical and easy to use
- Up to 100 cleanings per 800g jar

9011101 Six, 800g jars with scoop dispenser



Rapid-Klene®

Automatic Film Processor Cleaner

- Environmentally friendly and biodegradable
- Effectively and safely cleans
- No noxious fumes or scrubbing
- Contains no harmful chemicals

9018000 Case - 12 cartons
of 12 pouches
(144 - 63g pouches)

9018101 Carton - (12 - 63g pouches)



Pro Clean™

Professional Strength Tartar and
Stain Remover for Dentures, Partial,
Retainers and Night Guards

- Extremely effective cleaner
- Environmentally friendly
- Easy to mix & use during patient's prophylaxis or dispense for patient home use
- Fresh mint scent

9011103 Box of 25 packets
9011102 Case of 10 boxes
(25 packets/box)



Removalon®-I

Removes Set Cements

- Effectively removes cements
- Convenient and easy to store
- Concentrated powder dissolves quickly
- Environmentally friendly and biodegradable

9011005 Removalon-I Dry Pak
(6 expandable bottles - each
fills up to 1/2 gallon - 1.9L)

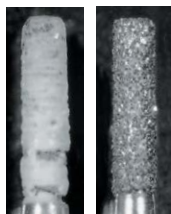


Brite Shield™

Static Soak & Ultrasonic Cleaner

- Cleans and polishes
- Environmentally friendly
- One jar makes up to 34 gallons (128.7L)

9011100 Six, 800g jars with scoop dispenser



Before After
Cleaning with
Brite-Shield

Versatile and
economical
enzymatic
cleaner





Topicale® Topical Anesthetic Gel Pumps

- Easy dispensing; minimizes waste
- 10-second onset
- 18% Benzocaine

1.51oz pumps (43g) 3 pumps per pkg

9007140	Assorted (Cherry, Raspberry, Pina Colada)
9007141	Cherry
9007142	Raspberry
9007143	Strawberry
9007144	Pina Colada



Topicale® Gel Jar

- 18% benzocaine formulation
- Use on areas of injection and/or prior to scaling and curettage to alleviate patient discomfort
- Tropical fruit flavored
- 25% more material than 1oz jars

9007161 Gel - 35g / 1.25oz jar



Topicale® Xtra Oral Anesthetic Gel

- Three fun favors, with no bitter after-taste
- 20% Benzocaine formulation for rapid 10-second onset of surface anesthesia of soft tissue
- Economical 1oz jar (28.35g)

9007152	Very Berry Cherry
9007153	Mint Freeze
9007154	Jammin' Strawberry
9007155	Assorted package of 3



Topicale® Ointment

Unique water-soluble base releases active ingredients on contact; permits onset of anesthesia in less than 20 seconds! Provides deeper surface anesthesia.

- Orange-raspberry flavor
- 18% benzocaine formulation

9007151 Ointment - 35g jar



Topicale® GelPatch™

Once placed in the mouth, Topicale GelPatch dissolves gradually - releasing benzocaine to anesthetize surface tissue for up to 20 minutes. Ideal for denture sores, prior to injection and oral ulcer/irritations - appropriate for patient home use.

- Fast acting
- Self-dissolving
- Flexible

9007149 GelPatch - (25) Mint



Prior to Injection



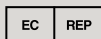
Oral Ulcers/Irritations



To schedule an in-office product demonstration, call 888-670-6100. Order through your dealer.
Visit www.premusa.com for current special offers.
Please contact your dealer concerning product availability in your country.

premier® Inspired solutions
for daily dentistry™

Premier® Dental Products Company • 1710 Romano Drive, Plymouth Meeting, PA 19462, USA
Phone 888-670-6100 • 610-239-6000 • Fax 610-239-6171 • www.premusa.com • E-mail: dentalinfo@premusa.com



MDSS GmbH
Schiffgraben 41
30175 Hannover, Germany



8610402 0517057 Rev32 NKP10M