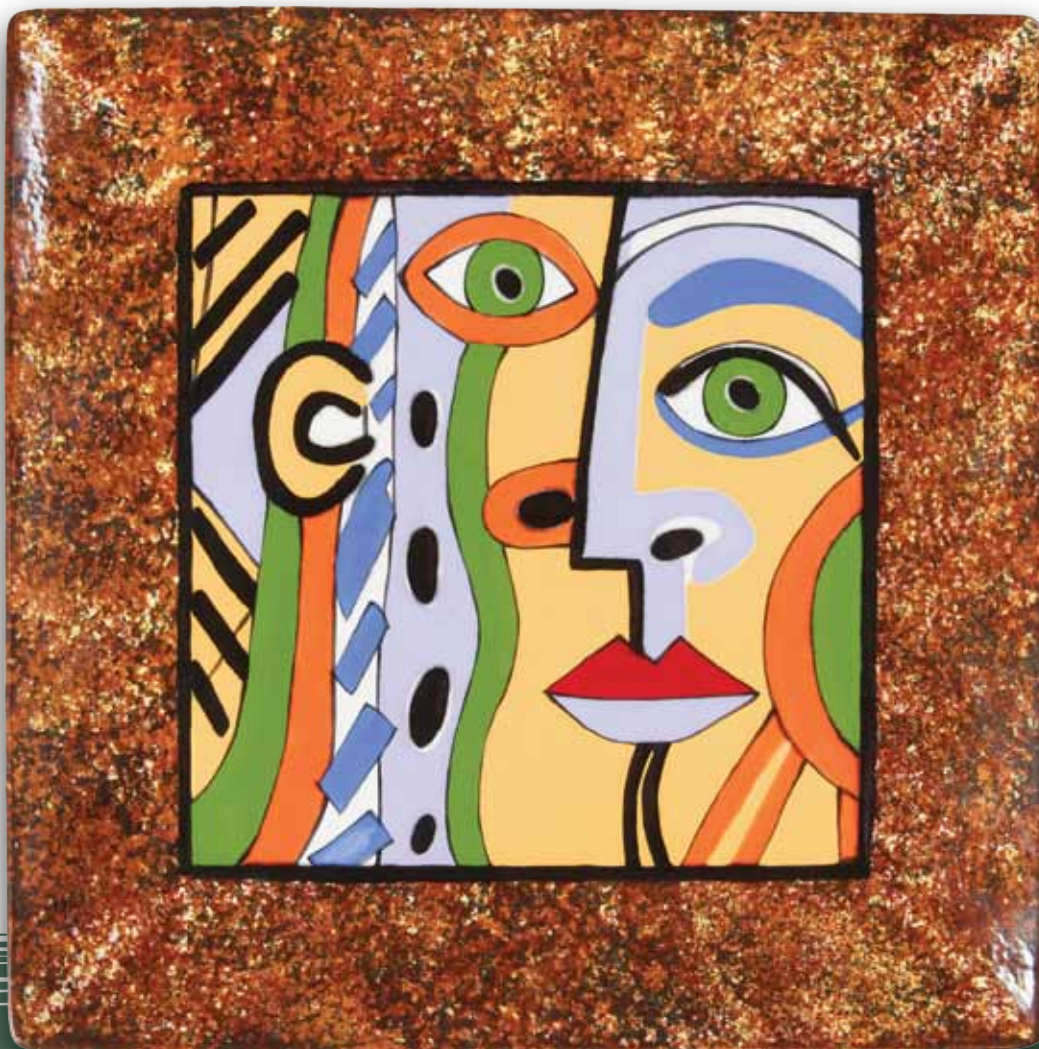


CERAMIC
ARTS
LESSON
PLAN

Duncan® ColorWorks™

CUBIC IMPRESSIONS



CREATE YOUR OWN PICASSO-INSPIRED WORK OF ART ON THE DUNCAN® OH FOUR® BISQUE SQUARE DINNER PLATE, THE PERFECT CANVAS FOR CUBIC STYLE IN VIBRANT COLORS FROM DUNCAN® CONCEPTS® UNDERGLAZES FOR BISQUE!

MATERIALS LIST

DUNCAN® OH FOUR® BISQUE

2/434 SQUARE DINNER PLATE

DUNCAN® CONCEPTS® UNDERGLAZES
FOR BISQUE

CN 022 BRIGHT SAFFRON

CN 052 BRIGHT TANGERINE

CN 074 REALLY RED

CN 112 BRIGHT DELFT

CN 182 BRIGHT KIWI

CN 232 BRIGHT BRIARWOOD

CN 253 BLACK

CN 261 LIGHT GRAPE

DUNCAN® PURE BRILLIANCE® CLEAR GLAZE

SIGNATURE BRUSHES

SB 802 NO. 1 LINER

SB 803 NO. 4 LINER

SB 806 NO. 6 ROUND

SB 807 NO. 6 FAN GLAZE

MISCELLANEOUS SUPPLIES

SMALL SILK SPONGE

FOAM PLATE FOR PALETTE

MASKING TAPE

CLAY CARBON PAPER

PENCIL

FOR BEST RESULTS, PLEASE READ ALL
INSTRUCTIONS BEFORE BEGINNING
PROJECT. REFER TO PHOTO FOR COLOR
AND DESIGN PLACEMENT.



INSTRUCTIONS:

1. Lightly wipe ware with a damp sponge to remove any bisque dust. Let dry.
2. Place clay carbon paper on center of plate then lay pattern on top. Trace over pattern lines with pencil to transfer design onto plate.



3. Apply strips of masking tape around the inside edge of center of plate, matching the edge of tape to the edge of frame. Press firmly along edges to seal from paint seepage.



4. Using a slightly dampened silk sponge, dab **Light Saffron** around the plate frame and backside of the plate.



5. Rinse sponge and repeat with **Bright Briarwood**, then **Black**. Allow a small amount of each color as well as the white bisque to show through each color. Remove the masking tape.



TIPS FOR SUCCESS:

- PROVIDE PIECES OF CARDBOARD OR SEVERAL LAYERS OF NEWSPAPER ON WHICH STUDENTS CAN PAINT AS WELL AS USE TO CARRY THEIR PLATE.
- SET UP A TABLE WITH UNDERGLAZE AND CLEAR GLAZE BOTTLES, BRUSHES AND SUPPLIES SO THE STUDENTS CAN GATHER WHAT THEY NEED TO COMPLETE THEIR PLATE PROJECT.
- HAVE PRINTOUTS OF PLATE PROJECT AVAILABLE TO STUDENTS TO REFER TO WHILE PAINTING.
- FOR BEST RESULTS WHEN PAINTING, STUDENTS SHOULD LET UNDERGLAZES AND GLAZE DRY IN BETWEEN APPLYING COATS.

6. Using the No. 4 Liner or the No. 6 Round as needed, apply three flowing coats of the following colors as indicated, letting dry between coats:

- **Bright Saffron:** face, ear and left side bar design
- **Light Grape:** area above eyebrow, down and around nose, bottom lip, abstract area with spots to the left of face and triangular space left of ear
- **Bright Delft:** under right eye, eyebrow, rectangular shapes to the right of ear
- **Bright Tangerine:** outer sun band and rays on right side of face, around left eye, left nostril, bar above and below ear
- **Bright Kiwi:** irises in eyes, center of sun, left side of face bar, left of ear bar
- **Really Red:** upper lip
- **Black:** wide band along nose line, chin line, nostrils, pupils, curved eyelash on right eye, around ear, dots in **Light Grape** bar, bars in **Light Saffron** on left side of plate.



7. Use the No. 1 Liner and **Black** to outline all elements with a thin line for detail as shown. Use the No. 4 Liner to add a **Black** outline around the inner edge of frame, framing the center of plate.

8. Stilt and fire to witness cone 06.*

9. Using the No. 6 Fan Glaze, apply two flowing coats of **Duncan® Pure Brilliance® Clear Glaze** to the entire piece. Allow the glaze to dry thoroughly between coats.



10. Stilt and fire to witness cone 06.

11. Use a stilt stone to remove stilt marks.

*Note: If you wish to glaze piece before firing, gently sponge on first coat of **Duncan® Pure Brilliance® Clear Glaze** to avoid smearing design. Let dry completely then brush on a second coat with No. 6 Fan Glaze.

VOCABULARY

BISQUE: FIRED, UNGLAZED OBJECT OF CLAY.

FIRE: TO HEAT CLAY IN A KILN AT A HIGH TEMPERATURE UNTIL IT BECOMES A CERAMIC OR TO HEAT A GLAZED CERAMIC SO THAT THE GLAZE ADHERES TO THE CERAMIC AND GIVES IT A FINISH.

FRIT: A PARTLY FUSED GLASS SUBSTANCE THAT HAS BEEN GROUND INTO A POWDER AND USED AS A BASIS FOR CERAMIC GLAZES AND ENAMELS.

GLAZE: A PREPARED MIXTURE OF FRIT THAT PRODUCES A GLASS-LIKE SURFACE WHEN FIRED.

BALANCE: A FEELING OF VISUAL EQUALITY IN SHAPE, FORM, VALUE OR COLOR.

National Visual Arts standards addressed:

- Understanding and applying media, techniques and processes
- Choosing and evaluating a range of subject matter, symbols and ideas
- Reflecting upon and assessing the characteristics and merits of their work and the work of others

The Artist

Pablo Picasso

One of the most recognized figures in 20th century art, Pablo Ruiz Picasso was a Spanish painter, draftsman and sculptor. Although he was born in the Andalusian region of Spain, he lived most of his adult life in France.

Picasso is best known for co-founding the Cubist movement with artist Georges Braque, and for the wide variety of artistic styles that he helped develop and worked in. In Cubist artworks, objects are broken up, analyzed and re-assembled in an abstracted form—the artist portrays the subject from a multitude of viewpoints to represent it in a greater context.

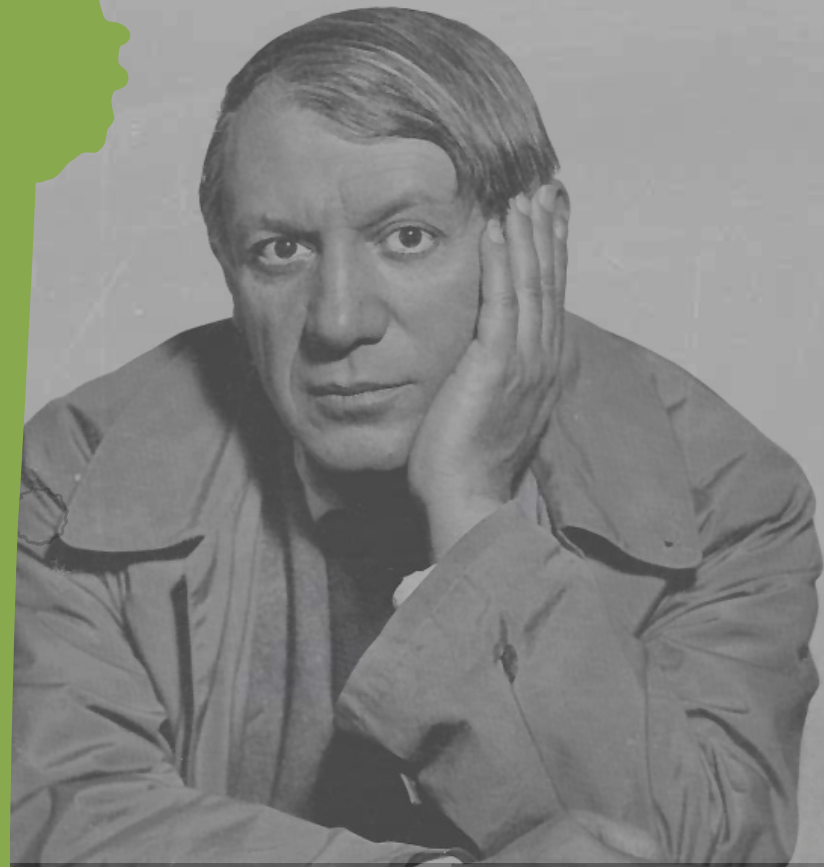
He created an estimated 50,000 works of art throughout his long lifetime of 91 years, including 1,885 paintings, 1,228 sculptures, 2,880 ceramics, roughly 12,000 drawings, many thousands of prints, and numerous tapestries and rugs.

In May 2010, Picasso's painting "Nude, Green Leaves and Bust" achieved the record as the most expensive painting in the world, being sold at auction for \$106.5 million.

Duncan

© 2011 iLoveToCreate®
5673 E. Shields Avenue
Fresno, CA 93727

Get inspired at www.ilovetocreate.com



PABLO PICASSO (25 October 1881 – 8 April 1973)



Portrait of a woman



Bust of a woman with a hat - 1964

Cubist Impressions Plate pattern

