



Simply beautiful

GRADIA® DIRECT
Composite Restoratives



3M





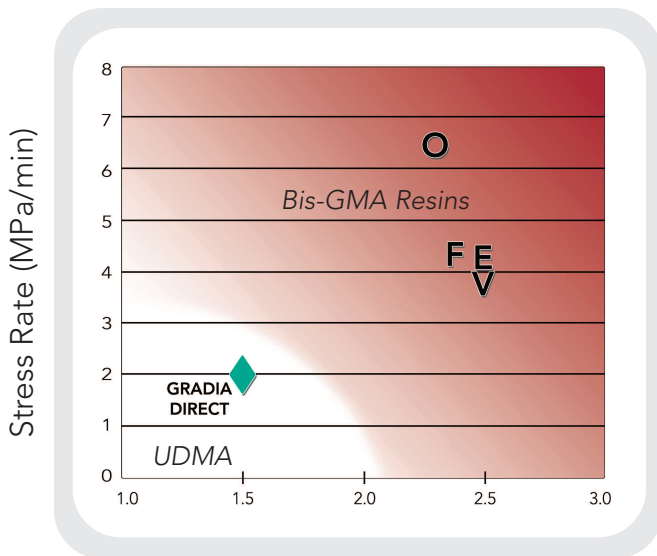
ONE

From simple imperfections to complete, high-end, multi-layered restorations, GRADIA® DIRECT restoratives provide you with simply beautiful results.

Designed to work together, the easy-handling, non-sticky GRADIA DIRECT family of premier composites:

- Employs the latest in micro and nano technologies
- Offers unmatched handling
- Features natural, lifelike coloring and characteristics
- Blends into the surrounding tooth structure to create stunning restorations
- Allows 90% of restorations to be done with only one shade
- Is brushable and not sensitive to ambient light

With GRADIA DIRECT composites, you can take your time crafting the most beautiful restorations possible.



Polymerization Shrinkage Stress (MPa)

Stay out of the shrinkage red zone.

GRADIA DIRECT's unique UDMA resin system absorbs polymerization shrinkage stress, reducing latent energy on bonding interfaces. Reduced interface stress helps protect margin integrity for longer lasting, gap free restorations and also minimizes post-operative sensitivity.

○ = GrandiO* V = Venus* E = Esthet-X*
F = Filtek Supreme Plus Universal Restorative*

GRADIA® DIRECT

Microfine Composite Restorative

Handling

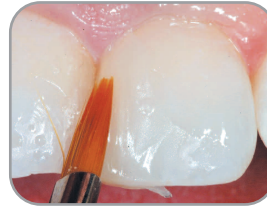
GRADIA DIRECT provides superior handling capabilities, with anterior shades that sculpt readily and posterior shades that offer exceptional strength and body. With plenty of working time, even in strong ambient light, its non-stick formula allows you to easily sculpt, shape and contour with unmatched artistry and precision.



GRADIA DIRECT is easy to place



Sculpts readily with a bladed instrument



Can be shaped and smoothed with a brush for reduced finishing time



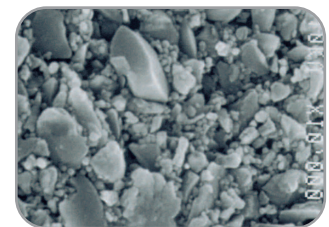
Natural looking — a perfect match

DENTISTRY BY
Dr. R. NASH

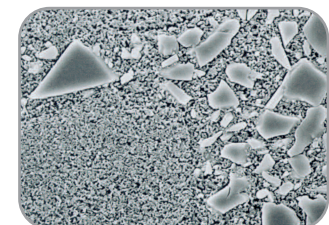
Beauty

GRADIA DIRECT attains natural reflectivity through the use of a multifaceted tooth-like particle structure, providing your restorations with true-to-life color while rendering them virtually undetectable compared to other restoratives.

The amount of each element and its particle size distribution has been carefully chosen so that when added together, many different interfaces occur with different reflective properties. The result is internal reflectivity and optical properties that replicate that of natural teeth.



Ordinary restoratives are made up of a simple particle structure (x10,000).



GRADIA DIRECT features a diverse, tooth-like particle structure (x10,000).



Single Shade Simplicity

GRADIA® DIRECT is so easy to use that 90% of restorations can be completed with just one shade. GRADIA DIRECT not only picks up the color and matches the surrounding teeth, it becomes esthetically “invisible” compared to other restoratives.

For more complex cases, GRADIA DIRECT features a simple-to-use Shade Guide (based on the VITAPAN Classical Shades) that includes unique, 4-step tabs to help you judge the influence of material thickness on a particular shade. By positioning one shade thickness over another, you can easily gauge the effect of shade layering.

Esthetic Dentistry by Dr. Wynn Okuda, Past President and Accredited Member of the American Academy of Cosmetic Dentistry, Private Practice in Honolulu, Hawaii



Multi-Shade Layering Guide

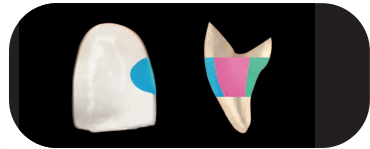
Class I & II



POSTERIOR OR UNIVERSAL
STANDARD SHADES

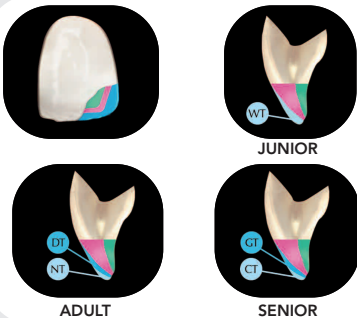
POSTERIOR OR UNIVERSAL
OUTSIDE SHADES

Class III



ANTERIOR OR UNIVERSAL
INSIDE SHADES (OPAQUE)

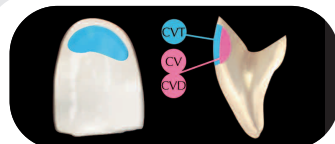
Class IV



ANTERIOR OR UNIVERSAL
STANDARD SHADES

ANTERIOR OR UNIVERSAL
OUTSIDE SHADES

Class V



ANTERIOR OR UNIVERSAL
STANDARD SHADES

ANTERIOR OR UNIVERSAL
OUTSIDE SHADES



A New Universal Composite

Restoring the X-Factor

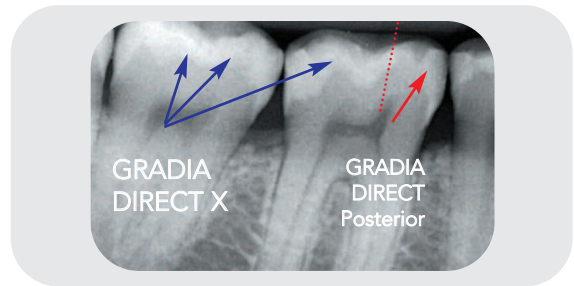
GRADIA® DIRECT X simplifies your esthetic restorations by combining ease of handling and extreme durability with high polishability for improved radiopacity and translucency — resulting in a more universal composite.

Plus, GRADIA DIRECT X offers your patients excellent wear resistance and a natural feel for added comfort. And it won't wear away opposing enamel, either.

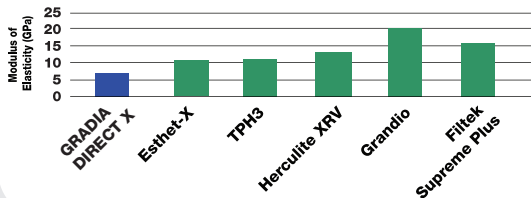


The X-Filler

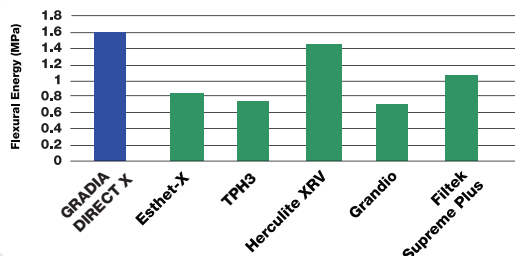
The GRADIA DIRECT X difference is found in its new nanofiller, which is made of a lanthanide element, to block X-rays, but not visible light. The result is a nearly 60% increase in radiopacity, as well as increased translucency, giving you a much more universal product that's effective in treating virtually any patient.



GRADIA DIRECT X has **60% higher radiopacity** compared to GRADIA DIRECT Posterior.



Gradia Direct X's low modulus absorbs stress while minimizing opposing enamel wear.



High flexural strength provides lasting durability for trouble free restorations.

GRADIA® DIRECT

Flowables

GRADIA DIRECT's line of flowables features excellent handling characteristics and high fluoride release, which improves the resistance of teeth to acidic attack to help prevent secondary decay.

GRADIA® DIRECT LoFlo

Specifically designed for easy handling upon placement into the proximal box and dentin, GRADIA DIRECT LoFlo provides 55% less shrinkage than the leading flowable composite on the market, while remaining highly wear-resistant. Its unique filler offers increased polishability and radiopacity. Plus, LoFlo is also a great 60-second sealant when used over GC G-BOND™.



GRADIA® DIRECT Flo

GRADIA DIRECT Flo is a highly flowable, fluoride-releasing composite designed to work in conjunction with GRADIA DIRECT. It offers balanced physical properties, low-viscosity/high-flow characteristics and direct application. Use it as a liner/base or sealant, for tunnel preps, or to block out undercuts and restore imperfections.



G-BOND™ – Effective in all conditions

The perfect complement to the GRADIA DIRECT family, G-BOND is the one-component, one-coat advanced 7th generation bonding system. G-BOND gives you a strong, long-lasting bond between light-cured composites, enamel and dentin in all surface conditions. And unlike earlier-generation bonding agents, G-BOND is an all-in-one etch-desensitize-prime-bond system that is not technique sensitive and never requires any mixing.

Bond Strength Comparison

Wet or dry, one-step, one-coat G-BOND creates a consistently reliable bonding interface that locks onto dentin and enamel in all surface conditions.

Visit www.got-g.com for more information.

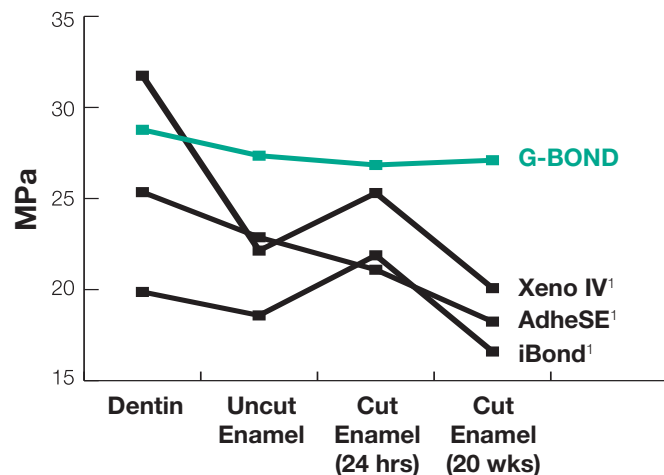
G-BOND Product Codes

002277 GC G-BOND

Contains: One 5 mL bottle of G-BOND, One Package of 50 Micro-tips, One Micro-tip Handle, One Dispensing Dish and Technique Card.

002302 (Unit Dose Package)

Contains: 50 Unit Doses (0.1 mL) of G-BOND, One Package of 50 Micro-tip Brushes and Technique Card.

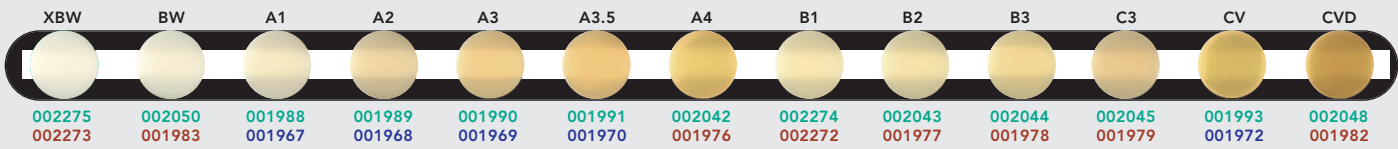


Source: Antebi, R.; Nathanson, D.; and Hughes, C.V. (IADR 2006), Bond Strength of Self-Etching Adhesives to Enamel and Dentin In-Vitro, Boston University.

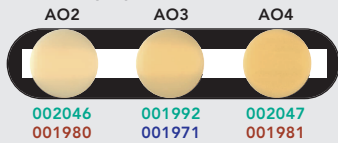
Not a trademark of GC America Inc.

GRADIA® DIRECT Anterior - No Barium or FAS fillers for ultimate aesthetics and handling (radiolucent)

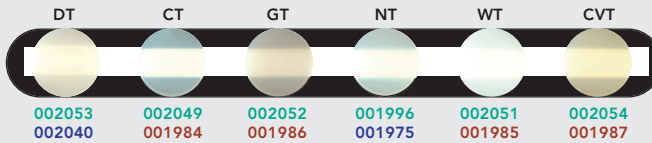
Standard



Inside Opaque Shades



Outside Translucent Shades

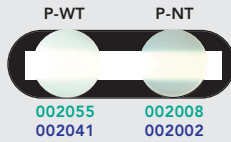


GRADIA® DIRECT Posterior - 6 Shades (radiopaque)

Standard



Outside Translucent

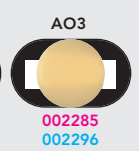


GRADIA® DIRECT Flo & LoFlo - 7 Shades (radiopaque)

Standard



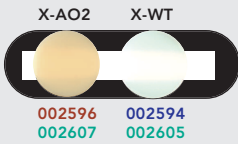
Inside Opaque



GRADIA® DIRECT X Universal 10 Shades (highest radiopacity)

NEW!

Inside



Outside



Standard



GRADIA DIRECT Syringe Refills

Contains: 1 Syringe (2.7 mL each)

GRADIA DIRECT Unitip Refills

Contains: 20 Tips (0.16 mL each)

GRADIA DIRECT Unitip Refills

Contains: 10 Tips (0.16 mL each)

GRADIA DIRECT Flo Refills

Contains: 2 Syringe (0.8 mL each)

GRADIA DIRECT LoFlo Refills

Contains: 2 Syringe (0.8 mL each)

- CV: Cervical
- CVD: Cervical Dark
- CVT: Cervical Translucent
- CT: Clear Translucent
- DT: Dark Translucent
- GT: Grey Translucent
- NT: Natural Translucent
- WT: White Translucent
- BW: Bleach White
- XBW: Extra Bleach White

Standard (Body) and Inside Special (Dentin) shades based on the Classic Vita® Shade Guide.

*Not a trademark of GC America Inc.

Related Item Product Codes

002009 GRADIA DIRECT Shade Guide

423000 Unitip Applier

423003 Mixing Pads (14B, 5 Pads, 1-5/8" x 2-3/8")

