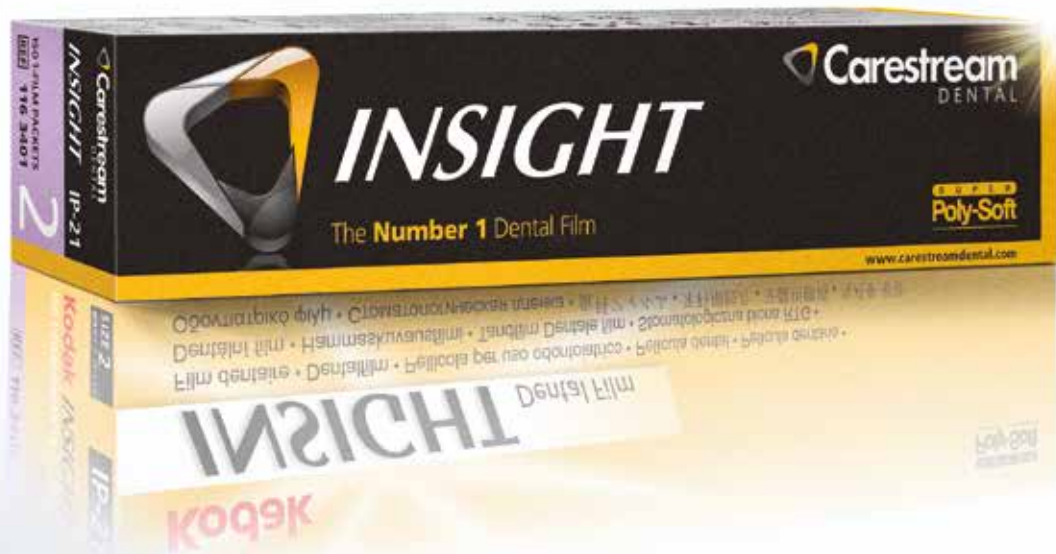


You have **known** and  
**trusted** us your entire career

Dental Film



Behind the box you see today  
is a **long heritage of expertise**

Early 20<sup>th</sup> century



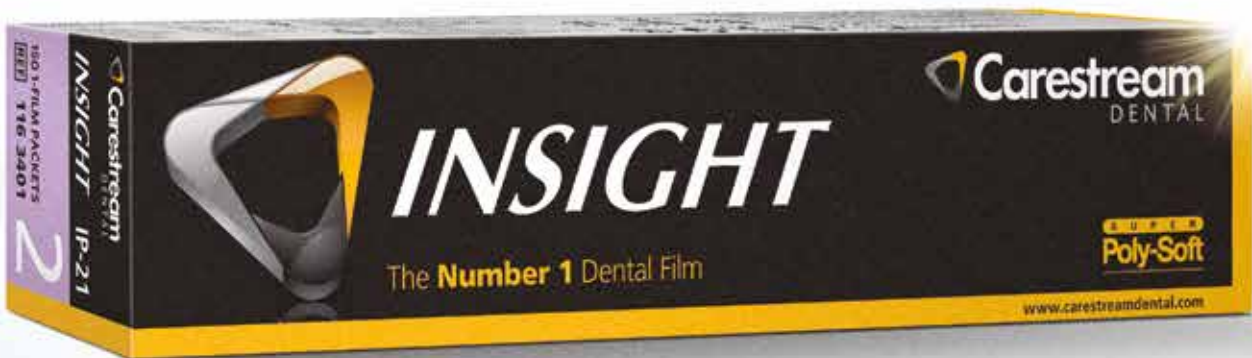
## Kodak, the original dental film for more than a century

A true original, Kodak film changed the way the world of dentistry works. Our experience has allowed us to continuously push the standards of image quality further.

We were once known as Kodak Dental Systems, but now we are a part of Carestream Dental. Nothing about the film itself has changed. We will continue our role as a dynamic pioneer contributing to the further development of the world of dental film and digital imaging.

The same pioneering  
**quality** and **reliability**,  
only the name has changed

Today



### The Carestream Dental advantage

- Comfortable and patient friendly
- High, consistent batch to batch quality
- A broad range of products available everywhere
- Comprehensive dealer network
- Easy to open packaging

# Kodak's heritage is now part of **Carestream Dental's unique approach**

## **Carestream Dental delivers the difference to your practice**

Carestream Dental is dedicated to enhancing dentists' everyday workflow with the aid of solutions designed to perfectly reflect their needs. We define this unique approach to the oral health care market as the Carestream Dental Factor. Exceptional film and digital image quality is a cornerstone of our dedication; it is the tool that enables dentists to make the right diagnosis and determine the optimal treatment.



### **[ Workflow integration ]**

Our systems and software are specifically designed to enhance care and to fit seamlessly into your busy practice. This allows you to spend less time on administrative tasks and more time providing patient care.



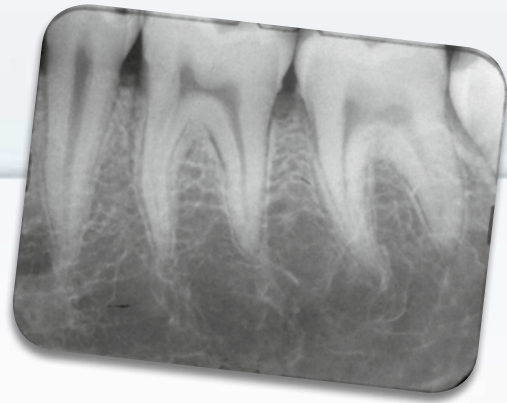
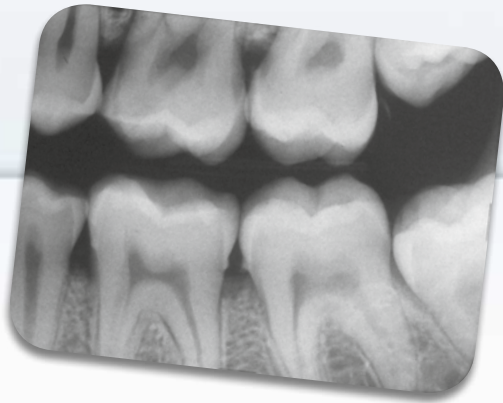
## [ Humanized technology ]

We keep our technology simple for you and your patients. Clear communication is the key to obtaining patient confidence and optimizing patient care.

## [ Diagnostic excellence ]

To make faster, more accurate diagnoses, detail is everything. Our film, diagnostic systems, digital imaging and software do more than just help you identify a problem; they show you where to take action.

The **best quality...**



## INTRAORAL FILM



### INSIGHT

The standard for intraoral film. With INSIGHT dental film, you'll get a true F-speed film that requires up to 60% less radiation per exposure.



### Ultra-speed

A D-speed film that generates the high-quality, detailed images you need to make accurate diagnoses.



### E-Speed

Blending quality and speed, E-speed provides brilliant image clarity with as little as one-half the exposure time required for traditional D-speed intraoral films.



### D-Speed

A cost-effective, high-quality solution if you need the technique settings of a traditional dental radiographic system. It delivers fine detail, high contrast and outstanding processing and handling characteristics.

...in a **broad range**



## EXTRAORAL FILM



### X-OMAT DBF

This film is an excellent choice when using blue-light emitting screens. It provides a 200-speed system when used with our X-OMATIC regular screens.



### T-MAT G/RA

This dental film provides high-contrast, detailed images of intervening tooth structures while retaining good soft tissue visibility when used with LANEX regular or medium screens.



### T-MAT E

An extraoral x-ray film for use with green-emitting screens. When paired with LANEX regular or medium screens, it is an excellent film screen combination for panoramic, cephalometric and TMJ radiography.



### T-MAT H/RA

Suitable for double loading techniques that yield two original radiographs from a single exposure. When double loading is combined with LANEX screens, the film system speed is 400. With single loading, the film system speed is 800, allowing for further exposure reduction.



### T-MAT L/RA

Ideal for visualizing soft tissue or when exposure control is difficult. It provides wide-latitude for excellent imaging of soft tissue areas of facial profile, while providing good bone and tooth structure detail when used with LANEX screens.



### EVG

This film provides Enhanced Visualization due to its zero crossover control. When paired with either EV screens or LANEX regular screens, it provides a 400 speed system.



Would you like to **know more?**  
Visit [www.carestreamdental.com/film](http://www.carestreamdental.com/film)