

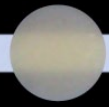
GC Fuji II LC®

LIGHT CURED, RESIN REINFORCED GLASS IONOMER RESTORATIVE

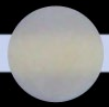


GC AMERICA: GLOBAL LEADER IN GLASS IONOMER TECHNOLOGY

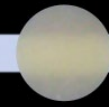
**Excellent
Translucency!**



GC Fuji II LC



Vitremer†



Photac Fil Quick†

Data on file.

TOUCH of GENIUS™

- GC Fuji II LC® is GC America's light cured, resin reinforced glass ionomer restorative with outstanding aesthetics, excellent translucency and continual, rechargeable Fluoride release.
- Ideal for Class III, Class V, Cervical Erosion and Root Surface Caries; #1 usage as base/liner in the sandwich technique.
- Strong chemical bond to tooth structure: micromechanically reinforced and triple-cured.
- Clinically proven: After two years: 100% retention, no sensitivity, no evidence of secondary caries and no change in surface luster¹.
- Easy procedure, reduced chair time and fewer steps than composites.
- 1.5 times the radiopacity of enamel (315% AI).
- Available as capsules, powder-liquid & in 10 Vita®† shades.



**Clinically Proven.
Outstanding Aesthetics.**

GC

Closed Sandwich Technique Using GC Fuji II LC®:



Class II preparation with shallow supragingival box. CAVITY CONDITIONER (GC) is recommended to remove the smear layer.



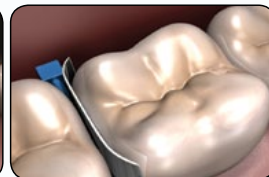
Placement of GC Fuji II LC® occlusally.



Light-curing of GC Fuji II LC®.



Apply G-Premio BOND™, then place G-aenial Sculpt™ composite, followed by light-curing.

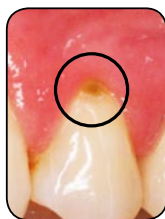


Final, aesthetic glass ionomer and composite sandwich technique restoration.

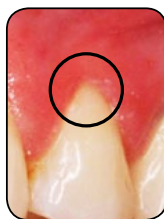
Outstanding Physical Properties & Handling:

Featuring an outstanding chemical bond to tooth structure, GC Fuji II LC®'s high compressive, tensile and flexural strengths assure longevity and integrity. Its consistency makes it easy to place and contour (with less "pullback" than composite). And, like all GC glass ionomers, it works perfectly in a moist field.

Class V Restorations using GC Fuji II LC®



Before



After

Photos courtesy of Dr. Robert Margeas, Des Moines, Iowa



Before



After

Photos courtesy of Dr. John Comisi, Ithaca, New York

| | GC Fuji II LC® (Capsules) | Vitremer [†] (Hand mix) | Photac Fill [†] (Capsules) | Ketac Nano [†] (Clicker Dispenser) |
|---|------------------------------|-------------------------------------|--|--|
| Storage (°C) | 4-25 | 10-27* | 15-25* | 2-27* |
| Working time | 3'15" | 3'00"* | 2'00"* | 2'30"* |
| Light curing | 20" | 40"* | 20"* | 20-30"* |
| Compressive strength (MPa) [^] | 178 | 147 | 134 | 114 |
| Flexural Strength (MPa) [^] | 63 | 62 | 46 | 37 |
| Radiopacity (% Aluminum) | 315 [^] | Yes | Yes | Yes |
| Shades | 10 | 9 | 8 | 6 |

¹Clinical Evaluation of Fuji II LC in Class V Restorations (2-Year Report), A. Boghosian, D.D.S, Northwestern University, March 1996

[†]Not a registered trademark of GC America Inc.

^{*}Product IFUs

[^]GC R&D Data



Ordering Information:

GC Fuji II LC® Capsule Refills (US)

Contains: 48 capsules.
425001 A1 425002 A2 425003 A3 425004 A3.5
425005 A4 425006 B2 425007 B3 425008 B4
425009 C2 425010 C4
Contains: 24 capsules.
425020 Dark Shades 425015 Light Shades

GC Fuji II LC® Capsule Refills (Canada)

Contains: 48 capsules.
442001 A1 442002 A2 442003 A3 442004 A3.5
442005 A4 442006 B2 442007 B3 442008 B4
442009 C2 442010 C4
Contains: 24 capsules.
442020 Dark Shades 442015 Light Shades

GC Fuji II LC® 1:1 Kit

Contains: 15g powder, 6.8mL liquid, mixing pad and measuring scoop.
000184 A1 000185 A2 000186 A3 000187 A3.5
000188 A4 000189 B2 000190 B3 000191 B4
000192 C2 000193 C4

GC Fuji II LC® Powder Refills

Contains: 15g powder.
000195 A1 000196 A2 000197 A3 000198 A3.5
000199 A4 000200 B2 000201 B3 000202 B4
000203 C2 000204 C4

000206 GC Fuji II LC® Liquid Refill

Contains: 6.8mL liquid.

000110 CAVITY CONDITIONER (GC)

Contains: 5.7mL liquid.