

LuxaCore® Dual

■ The core material that cuts and feels like dentin



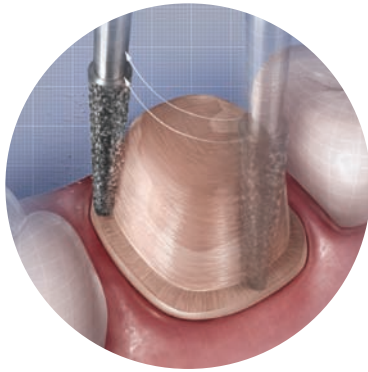
Advantages

- Superior composite resin cures to a hardness and consistency comparable to healthy dentin, for easy, accurate cutting
- Choice of light cure or self cure enables flexible working time and guarantees a complete cure
- Easy-to-use, convenient Automix and Smartmix® dispensing systems



DMG
AMERICA

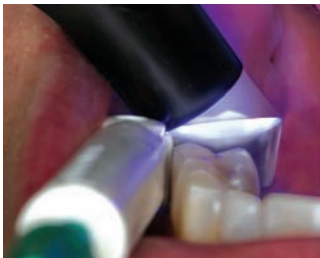
▲ LuxaCore Automix Dual ▲ LuxaCore Smartmix Dual



LuxaCore Dual cuts so precisely, it delivers smooth, undercut-free surfaces and flat shoulders.



For convenient dispensing, LuxaCore Dual is available in no-mess 50 g Automix cartridges for use with the Type-25 1:1 dispensing gun, as well as easy-to-handle 9 g Smartmix® 1:1 handheld syringes.



With light cure, you can "cure on demand" to speed procedures and reduce patient chair time.



The exceptional workability of LuxaCore Dual produces more accurate preparations and results in perfect-fitting crowns, with no open margins.

LuxaCore® Dual Core Material

Superior strength, flexible working time make it number one.

LuxaCore Dual has remained the number-one selling* dual-cure core build-up material because no other product offers its combination of high compressive strength, workability and convenience.

Exceptionally workable and cuttable.

LuxaCore Dual dispenses at a workable viscosity that enables direct placement without slumping. Then, it cures to a hardness and consistency comparable to healthy dentin, for exceptionally easy and accurate cutting. LuxaCore Dual eliminates the need for layering and permits bulk fill. It's also radiopaque and releases fluoride to help prevent secondary caries.

Choice of flexible curing options.

For maximum speed, you can light cure in as little as 20 seconds. Or, you can allow the material to self-cure for increased working time (see chart below).

Three different shades to meet your needs.

LuxaCore Dual is available in three shades: Natural (A3), for optimal esthetic results; Blue, which is easily distinguishable from tooth structure; and White, which provides the perfect balance of contrast and esthetics.



Physical Properties: LuxaCore® Dual

Composition	Barium glass 69%, pyrog. silica 3% in a Bis-GMA based matrix of dental resins
Mix Ratio	1:1 base/catalyst
Working Time	1:30 minutes
Light-Cure Time	2 mm @ 20 seconds, 4 mm @ 40 seconds
Self-Cure Time	5 minutes
Compressive Strength	300 MPa
Transverse Strength	120 MPa
Diametrical Tensile Strength	60 MPa
Water Sorption	25 µg/mm ³

Ordering Information: LuxaCore® Dual

212058	LuxaCore Automix Dual Intro Kit – Blue Shade (1-50 g Cartridge, 1 Type-25 Dispensing Gun, 35 Automix Tips and 35 Intraoral Tips)
212033	LuxaCore Automix Dual Intro Kit – Natural (A3) Shade (1-50 g Cartridge, 1 Type-25 Dispensing Gun, 35 Automix Tips and 35 Intraoral Tips)
212127	LuxaCore Automix Dual Intro Kit – White Shade (1-50 g Cartridge, 1 Type-25 Dispensing Gun, 35 Automix Tips and 35 Intraoral Tips)
212012	LuxaCore Automix Dual Refill – Blue Shade (1-50 g Cartridge, 35 Automix Tips and 35 Intraoral Tips)
212011	LuxaCore Automix Dual Refill – Natural (A3) Shade (1-50 g Cartridge, 35 Automix Tips and 35 Intraoral Tips)
212126	LuxaCore Automix Dual Refill – White Shade (1-50 g Cartridge, 35 Automix Tips and 35 Intraoral Tips)
110253	LuxaCore Automix Dual Dispensing Gun (1 Type-25 1:1 Gun)
110424	LuxaCore Automix Dual Tips and Intraoral Tips (Bag of 35 each)
212038	LuxaCore Smartmix Dual – Blue Shade (2-9 g Syringes, 10 Smartmix Tips and 10 Intraoral Tips)
212039	LuxaCore Smartmix Dual – Natural (A3) Shade (2-9 g Syringes, 10 Smartmix Tips and 10 Intraoral Tips)
212064	LuxaCore Smartmix Dual – White Shade (2-9 g Syringes, 10 Smartmix Tips and 10 Intraoral Tips)
212042	Smartmix Tips and Intraoral Tips (Bag of 50 each)

For more information, call us at **1-800-662-6383**. To find out more about all of our innovative dental products, visit our website at www.dmg-america.com

DMG America

242 South Dean Street
Englewood, New Jersey 07631
P: 800-662-6383 • 201-894-5505
F: 201-894-0213 • www.dmg-america.com



*SDM, 3rd Quarter 2008