

Visit www.gcamerica.com for special offers and introductory pricing on products featured in this flyer and more!



GI LUTING CEMENTS

Self Cure



The First Paste-Paste Automix Resin Reinforced GI Cement

GC FujiCEM™ 2 – Radiopaque resin reinforced glass ionomer cement in paste-paste auto-mix delivery for a consistent mix every time.

Indications:

- Cementing metal, PFM, resin, high strength ceramic crowns, bridges, inlays and onlays
- Cementation of metal, ceramic, and fiber posts

Self Cure



The Ultimate Physical Properties for Resin Reinforced GI Cementation

GC Fuji PLUS® – Radiopaque resin reinforced glass ionomer luting cement available in capsule delivery and powder-liquid.

Indications:

- Cementing metal, porcelain fused to metal PFM, resin, high strength ceramic crowns, bridges, inlays and onlays
- Cementation of metal, ceramic, and fiber posts

Self Cure



GC Fuji I® – Radiopaque glass ionomer luting cement with snap set. Available in capsule delivery and powder-liquid.

Indications:

- Cementation of metal-based inlays, onlays, crowns, bridges and posts
- Cementing metal, PFM, bridges, inlays and crowns
- Cementing orthodontic bands
- Cementing stainless steel crowns
- Base or liner

Low expansion

Rechargeable fluoride

Improved translucency

GC - the world leader in glass ionomer technology introduces several significant advances.

Biomimetic

Moisture friendly

Bulk filling

A class of material whose time has come!

Biocompatible

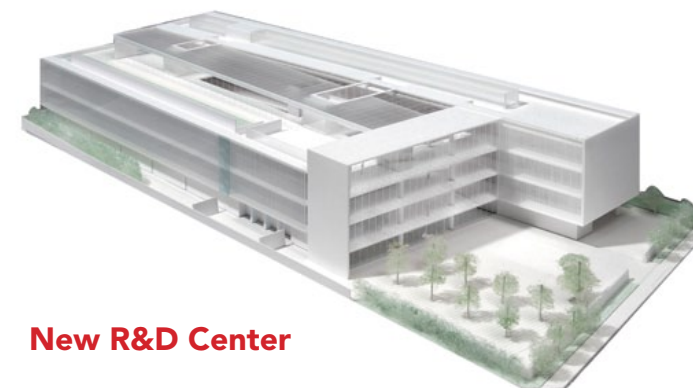
Self-adhesive

Fluoride releasing

Hydrophilic

Virtually no sensitivity

	EQUIA® Forte	GC Fuji IX GP® EXTRA	GC Fuji II LC®	GC Fuji LINING™ LC	GC Fuji TRIAGE®
Restorations:					
Class III restorations					
Class V, root surface caries, cervical erosion					
Class I and II pediatric restorations					
Long-term temporary restoration					
Class I and II in permanent teeth					
Core build-ups					
Bases and liners					
Sandwich technique					
Liner under composite or amalgam					
Base under amalgam, composite, porcelain					
Inlays and onlays					
Fissure sealant, root surface protection					
Protection for partially erupted molars					



New R&D Center

See inside for more information.



SKU# 605005
800.323.7063
www.gcamerica.com
www.gcamerica.com/training
© 2015 GC America Inc.



Glass Ionomer Material Science Continues to Advance and Grow in Popularity Worldwide...

Here's Why:

FEATURES	BENEFITS
Self-adhesive, excellent marginal seal	No need for bonding agents
Continual rechargeable Fluoride release	Releases Fluoride to adjacent tooth structure
Biocompatible material with coefficient of thermal expansion like tooth structure	Long lasting marginal integrity
Fast and easy moisture tolerant technique	Time saving/no need for isolation
The new generation of glass ionomer	Offering vastly improved esthetics and strength indicated for classes I, II, III, IV, & V

GI RESTORATIVES

Stronger, Smoother & Wear Resistant

NEW!

EQUIA® Forte – Bulk Fill, Fluoride Releasing, Rapid Restorative System. Two-step approach that combines EQUIA Forte Fil and EQUIA Forte Coat.

EQUIA Forte builds on the remarkable clinical performance of original EQUIA and presents an aesthetic and effective alternative to amalgam, composites and compomers. 20% higher flexural strength, 21% increased acid resistance and 40% improved wear resistance, when compared to original EQUIA!

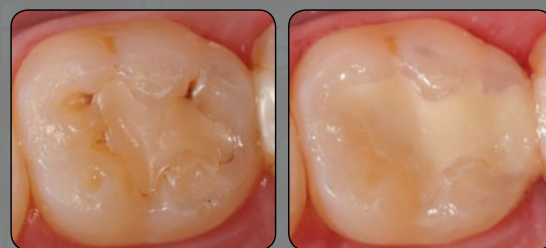
Expanded Indications:

- Class I Restorations
- Stress and non-stress bearing Class II restorations
- Intermediate restorative
- Class V and Root Surface restorations
- Core build up

EQUIA Forte Coat now available in unit dose.

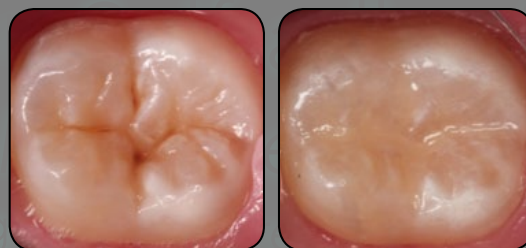


Stress bearing Class II Restoration using EQUIA Forte



Photos courtesy of Dr. Mark Pitel, Poughkeepsie, New York.

Class I Restoration using EQUIA Forte



Photos courtesy of Dr. Dan Ward, Columbus, Ohio.

Self Cure



More Translucency, More Fluoride, Fast Setting

GC Fuji IX GP®, Fuji IX GP® FAST, Fuji IX GP® EXTRA – Packable posterior restorative. Self-curing. Available in eight Vita® shades in powder-liquid (GC Fuji IX GP only) and capsule delivery.

Indications:

- Class I and II restorations (non stress bearing)
- Core build-ups
- Pediatric / geriatric restorations
- Base or liner (sandwich technique)
- Intermediate restorative
- Long term temporization

GC Fuji IX GP FAST sets twice as fast as GC Fuji IX GP, GC Fuji IX GP EXTRA has an even faster setting time, releases more fluoride and is extra translucent.

The Standard in Resin Reinforced GI Materials

Light Cure



GC Fuji II LC® – Resin reinforced restorative with excellent aesthetics. Rapid light curing. Available in ten Vita® shades in capsule delivery and powder-liquid.

Indications:

- Class III and V restorations
- Cervical erosions
- Root surface lesions
- Pediatric restorations
- Base or liner (sandwich technique)

GI BASE & LINERS

Light Cure



GC Fuji LINING™ LC - Radiopaque light-cured lining material. Available in paste-paste delivery and powder-liquid.

Indications:

- Base and liner under composite resins, amalgams and porcelains

GI SEALANT / SURFACE PROTECTION

Self Cure



GC Fuji TRIAGE® – Innovative sealant and surface protectant. Works in moist environment. Self-curing. Available in capsule delivery in pink or white.

Indications:

- Partially erupting molars
- Provides lasting relief of hypersensitivity
- Temporary endodontic sealing - provides effective seal between endodontic visits
- Intermediate restorative for rampant caries - first step in overall treatment