

# ACTIVA™ BioACTIVE-RESTORATIVE™

Inspired by Nature



PULPDENT®

## The Future of Dentistry Now in Your Hands

### THE BIOACTIVE DIFFERENCE

ACTIVA stimulates mineral apatite formation and natural remineralization at the material-tooth interface. This process knits the restoration and the tooth together, penetrates and fills micro-gaps, reduces sensitivity, guards against secondary caries, and seals margins against microleakage and failure.

### NEW STANDARD OF CARE

ACTIVA is the first in a new generation of esthetic, durable, bioactive restorative materials that play an active role in maintaining oral health with release and recharge of significant amounts of calcium, phosphate and fluoride.

### APATITE FORMATION SEALS AND PROTECTS TEETH

ACTIVA is a "smart" material that responds to pH cycles with release and recharge of its mineral components. It stimulates formation of a protective/connective layer of mineral apatite that is the defining requirement of bioactive materials.

### ESTHETIC AND DURABLE

ACTIVA is a highly esthetic restorative that resists wear and chipping, and absorbs shock and stress forces like natural teeth. It is tougher and more durable than traditional restorative materials.

### YOUR PATIENTS WILL THANK YOU

ACTIVA represents a proactive approach to dentistry that anticipates future oral health needs and emphasizes prevention and long-term patient care. Be proactive. Build your practice with ACTIVA BioACTIVE products.

### NO BISPHENOL A

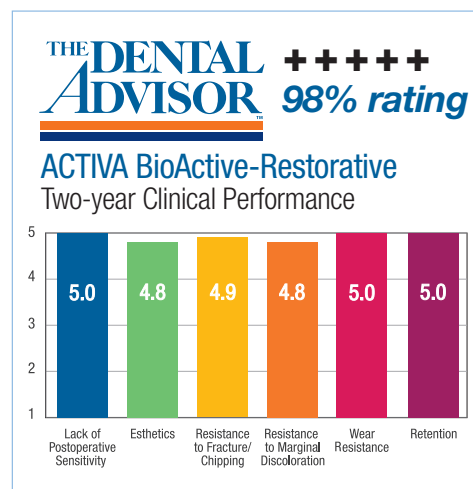
ACTIVA is safe for all patients. It contains no Bisphenol A, no Bis-GMA and no BPA derivatives.

### PATENTED BIOACTIVE CHEMISTRY

Patented bioactive resin, patented rubberized-resin, and reactive glass fillers deliver an unparalleled combination of physical and chemical properties. ACTIVA is moisture friendly, dimensionally stable, dual cure and radiopaque.

### FAST AND EASY TO USE

Automix syringe delivery, no sensitivity, indicated for Class I, II, III, IV and V restorations. Ideal for bulk filling.



Totally cool and utterly awesome... a restorative dentistry game-changing advancement.

– Dr. Ted Croll

Activa is one of the best materials to hit the market in years. – Dr. Josh Wren

## ACTIVA 53-month Recall



**1A December 2012**  
Shows prepared tooth after removal of old amalgam.  
*Courtesy of Dr. John Comisi*

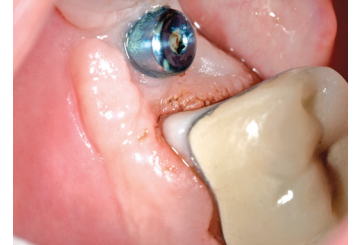


**1B May 2017**  
53-month recall shows great esthetics, no wear or chipping, and no marginal staining.

## Repairing Caries Under Crown Margin



**2A** Caries under crown margin has been removed. 5-second etch and removal of all excess moisture not shown.



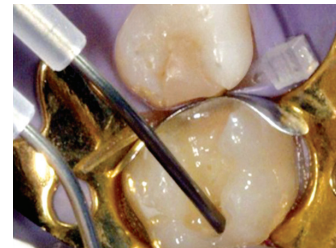
**2B** Moisture-friendly ACTIVA bonds to tooth, metal and ceramics, and mimics the function of missing tooth structure.

*Courtesy of Dr. Robert Lowe*

## Replace Failed Composite with ACTIVA BioACTIVE-RESTORATIVE



**3A** Shows 5-second etch. After rinsing, all excess moisture is removed.



**3B** ACTIVA BioACTIVE-RESTORATIVE is placed through bendable metal cannula.



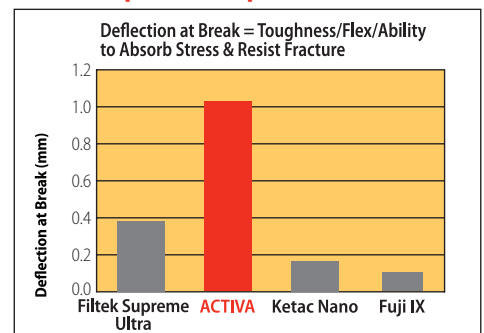
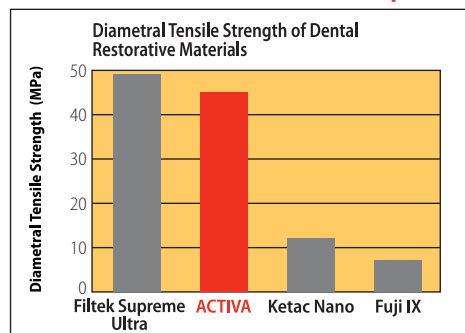
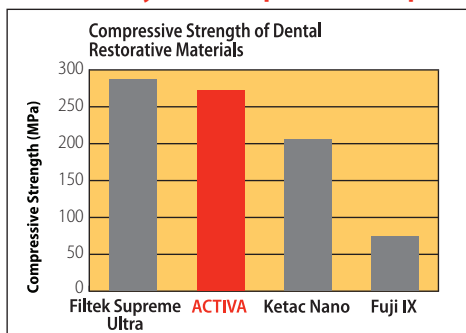
**3C** Explorer is used to create anatomy.



**3D** Shows finished and polished restoration.

*Courtesy of Dr. Mark Cannon*

## ACTIVA Physical Properties Outperform RMGIs and GIs and are Comparable to or Surpass Composites



Filtek = Composite; ACTIVA = Bioactive Restorative; Ketac Nano = RMGI; Fuji IX = Glass Ionomer  
*Filtek, Ketac and Fuji IX are trademarks of 3M ESPE, 3M ESPE and GC respectively. University testing*

### ACTIVA™ BioACTIVE-RESTORATIVE™

Requires ACTIVA-SPENSER™

VR\* **Starter Kit:** 5mL/8gm syringe, ACTIVA-SPENSER™ + 20 assorted mix tips  
*Starter Kit available in A1, A2 and A3 shade only*

VR1\* **Single Refill:** 5mL/8gm syringe + 20 assorted mix tips

VR2\* **Value Refill:** 2 x 5mL/8gm syringe + 40 assorted mix tips

\*Specify Shade: A1, A2, A3, A3.5 (for A3.5)

### ACTIVA™ BioACTIVE/BASE-LINER™

ACTIVA-SPENSER™ is optional

VB1 **Single Pack:** 5mL/7gm syringe + 20 mix tips with bendable 20-gauge metal cannula

VB2 **Value Pack:** 2 x 5mL/7gm syringes + 40 mix tips with bendable 20-gauge metal cannula

### ACTIVA-SPENSER™

For 5mL 1:1 Automix Syringes

DS05 Dispenser for 5mL automix syringe

### TIPS – APPLICATOR

A20N1 Automix Tips, clear, with bendable 20-gauge metal cannula – pkg of 20

A50N1 Automix Tips, clear, with bendable 20-gauge metal cannula – pkg of 50  
*For use with 2.5mL, 5mL and 10mL 1:1 automix syringes*

Contact PULPDENT or your local PULPDENT sales representative about ACTIVA™ today