

**Beyes**<sup>®</sup>  
*The Next Standard*

# Comfortek<sup>®</sup> X1



# Comfortek<sup>®</sup> X1 Series

Comfortek<sup>®</sup> X1 Series is the best dental operating system of its class.

Designed and built fully according to industrial standard and offering high quality using advanced production process. Comfortek<sup>®</sup> X1 Series is tailored for professionals in mind. It has all the features to provide optimal support with ergonomic design for better workflows, high quality standards in processing and design, and an unsurpassed value. Using our innovative power to provide more efficiency during treatments and improving the working environment.



**Unsurpassed Value**



**Ergonomic Design**



**High Quality**



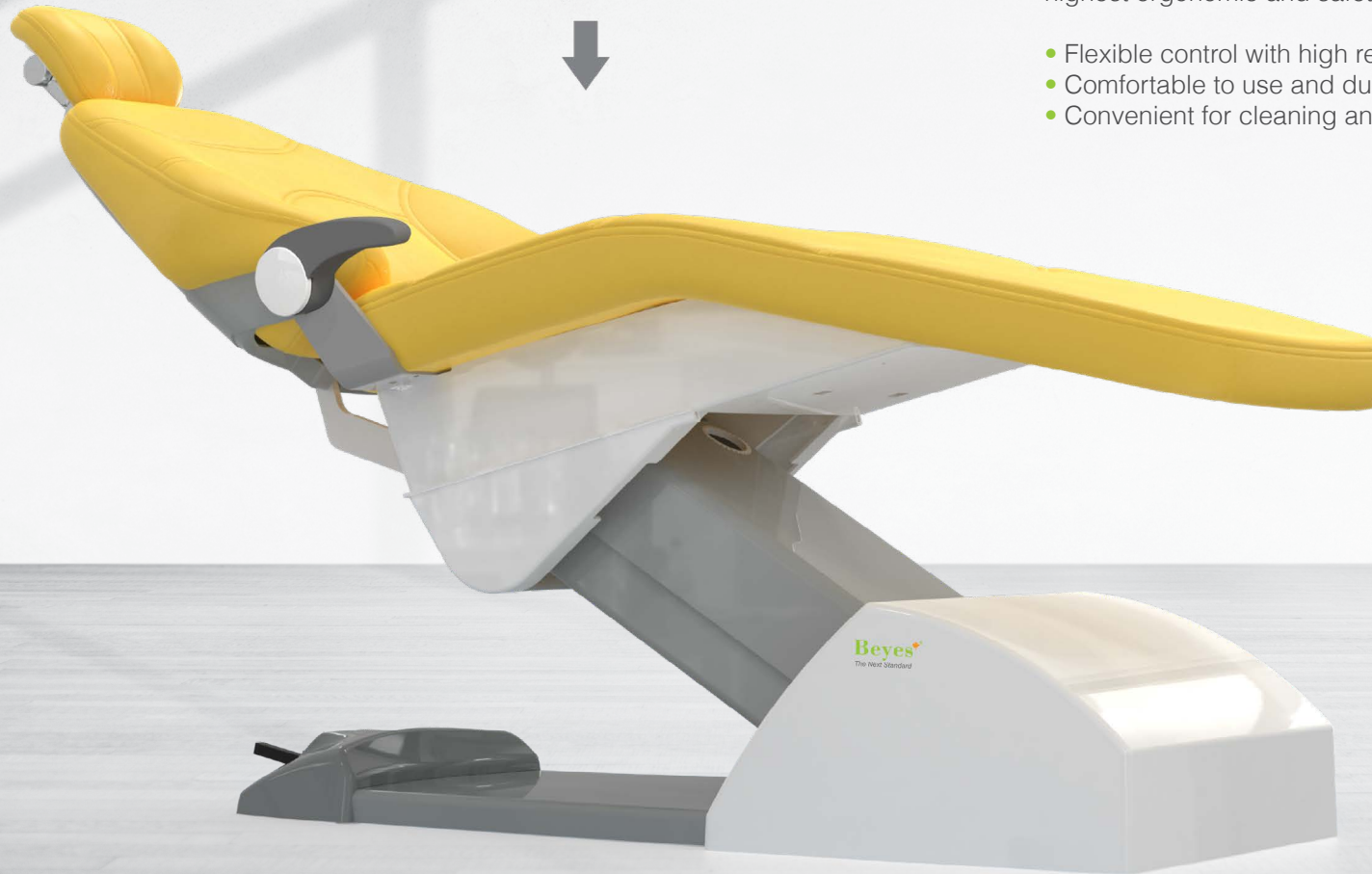
Load Capacity Max **485lbs**



### German Concept, Ergonomic Design

Originated from the design concept of German engineers and after more than 10 years of process improvement, the innovated Comfortek X1 has a robust structure and meets highest ergonomic and safety standards.

- Flexible control with high reliability.
- Comfortable to use and durable.
- Convenient for cleaning and disinfection. More hygienic.



**Beyes**  
The West Standard



## Reliable & Durable

Comfortek X1 has a robust structure, the main frame is composed of cast aluminum and steel parts.

Electrostatic powder spraying and anti-rust treatment on the surface make all these metal parts have stronger anti-corrosion and anti-scratch qualities.

## A Peace of Mind

Chair lock enables safe operation, avoid accident caused by unexpected movement of the chair position.



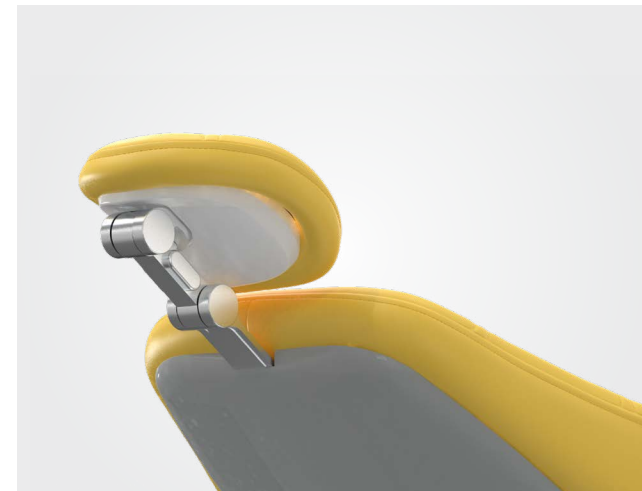
## Comfortek X1

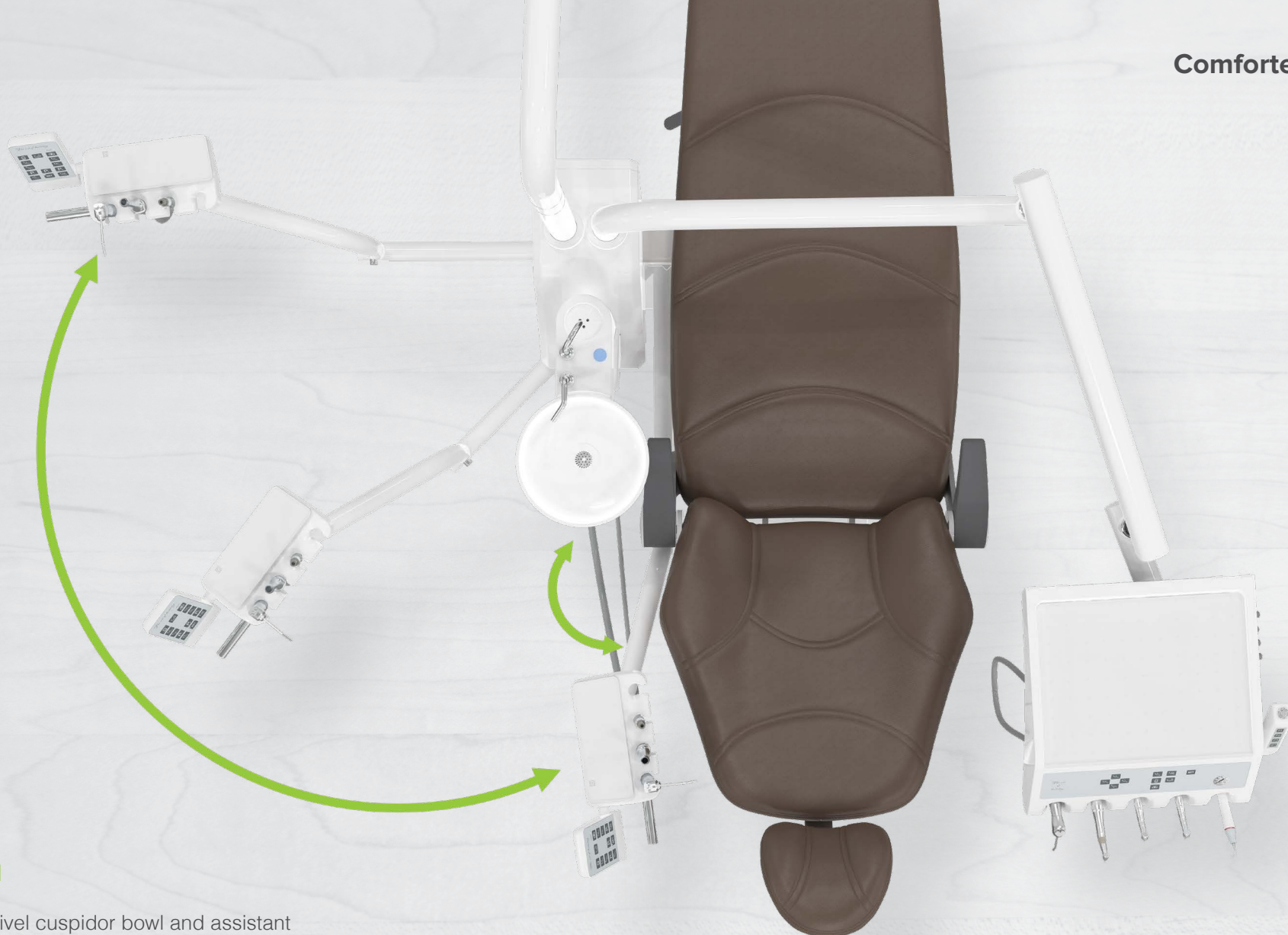
### Comfort in Mind

With double-articulated headrest and comfortable seat, height can be raised and lowered freely in the range from 380mm to 780mm, including the last-seat-height memory function. It can be adjusted for the elderly, pregnant women and other patients with limited mobility to receive treatments.

### Upgraded Materials

Upgraded materials: durable, easy-to-clean, high-density cushioning.





**Flexible Control**

The wide range swivel cuspidor bowl and assistant arm provide the biggest possible treatment space.

# Comfortek X1

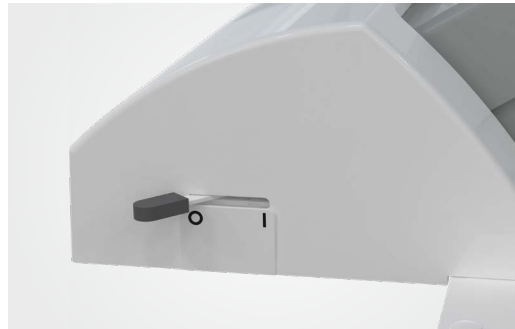
## One-Key Adjustment of Dentist Element

With the air lock switch on the handle of the dentist element, the unit can be adjusted to optimal position with a mere press of a button.



## Simple and Quick Operation

The dentist element and assistant arm can have the control panels with the same functions, both of which are for simple and quick operation. The control panels are perfect for seamless cooperation between the dentist and assistant.



## Main Switch

Main switch for all (air, water and electricity), avoids standby status of the chair and prolonging its life. It will reassure the unit is off when chair is not in use.



## Complete Hygienic

The removable suction filter kit and 360° rotatable stainless water outlet make cleaning and disinfection easy and convenient.



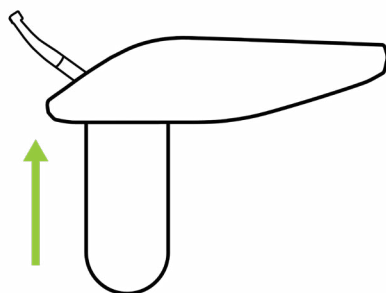
## Full Foot-Control

Full foot-control operation to avoid cross contamination, the seat can be adjusted handsfree.

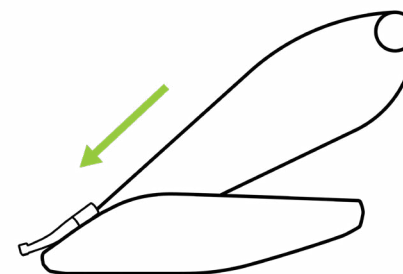
Dentist Element Style



Traditional (Hanging Hoses) Version



Continental (Whip Arm) Version



### Automatic Flushing and Disinfection System with Hygiene Holder

Our system offers a fully automatic flushing and disinfection process for all instrument hoses and suction lines. Simply connect the instruments to the hygiene holder and initiate the cleaning program — the system will automatically complete the flushing and disinfection cycle with no manual intervention required.

This solution ensures thorough internal cleaning, minimizes infection risks, and simplifies daily maintenance. The hygiene holder keeps all hoses organized and properly positioned for maximum cleaning efficiency.

- One-touch activation, fully automated process
- No need to disassemble hoses for disinfection
- Deep internal flushing for thorough cleaning
- Enhances clinic hygiene standards
- Reduces daily maintenance workload



## Doctor and Assistant Seating

### Intelligent Flexible Backrest

The backrest of the operator stool is designed with an adaptive swing range, allowing slight self-adjustments to better conform to the dentist's posture and movements, providing enhanced support and greater comfort during long procedures.

### Ergonomic Curved Backrest for Superior Support

The ergonomically curved backrest fits the natural contour of the human spine, delivering optimal support and reducing fatigue.

### Anti-Slip Seat Design with Thigh Pressure Relief

The front side of the seat cushion is raised to prevent the doctor from sliding forward during the treatment. The hips and legs are curved to prevent compression for extra comfort when you move and also provides stability.





### Dimmable Sensor LED Light

Adjustable color temperatures (measured in Kelvins) with luminance memory.

Three-axis adjustment for optimal positioning.

Automatically switches off when the chair moves to protect patient comfort.



## Multimedia PC System

### 1 Monitor Arm

Install either a monitor, TV, or all-in-one built in PC system of your choice on this stable media arm on your modern operator. The monitor arm comes in two choices, the basic arm or the extended version, illustrated in the pictures.

### 2 Canaview Intraoral All-in-One System

An all-in-one PC system with high resolution display to be mounted directly onto the monitor arm to enhance patients' experience. Including a crystal clear intraoral camera which is integrated into the PC system, available to assist with operations and patient care.



Optional Configurations



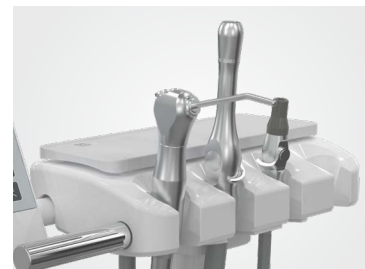
Monitor Arm



Monitor Arm Extended  
(Extra flexible)



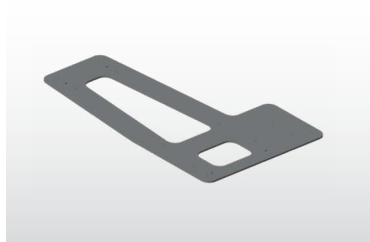
Canaview Intraoral  
All-in-One System



Aistant Tray



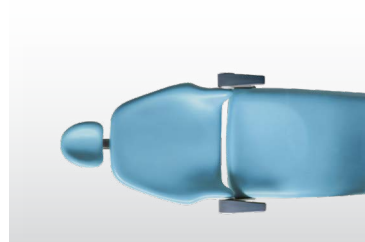
Secondary Tray



Additional Steel Base Plate



Proportional Foot Control



Seamless Upholstery



Disinfection System  
with Hygiene Holder



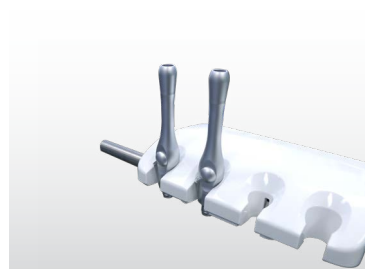
Handpiece Light Source System



Electric Motor



Curing Light



Second HVE Suction



Quick Disconnect  
(Air or Water) x1



Quick Disconnects  
(Air and Water) x2

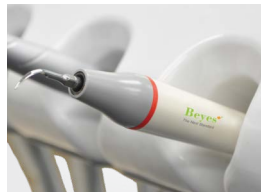
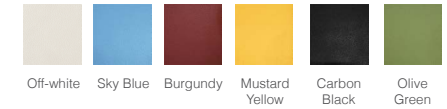
and more.....

## Comfortek® X1 Expert Dental Operating System

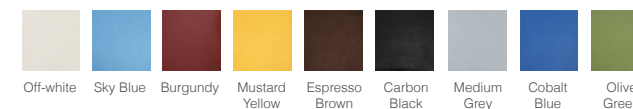
### Includes:

- Stitched upholstery design
- **Heavy-duty aluminum backrest**
- Double post design
- Flexible delivery system with control panel
- 3 programmable memory positions
- **One 6-Pin fiber-optic tubing**
- **Built-in piezo scaler**
- 4 instrument position on premium swiveling assistant side with premium control panel
- Removable and 360° rotatable stainless steel water outlet
- Main switch for all (air, water and electricity)
- M7 LED light
- 4-way foot switch
- **Dentist and assistant stool**
- Premium color collection
- Extended 8 years warranty parts, 1 year labor & parts

### Color Option:



Color Option:

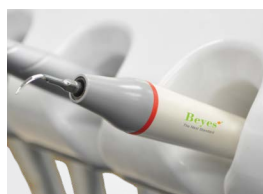


# Comfortek® X1 Master

Comprehensive & Advanced Technology

**Includes:**

- Stitched upholstery design
- Heavy-duty aluminum backrest
- Double post design
- **Flexible delivery system with luxury touch display control panel**
- **Air lock switch with 5-way joystick**
- 3 programmable memory positions
- **Two 6-Pin fiber-optic tubing**
- Built-in piezo scaler
- **Built-in electric motor**
- 4 instrument position on premium swiveling assistant side with premium control panel
- Removable and 360° rotatable stainless steel water outlet
- Main switch for all (air, water and electricity)
- M7 LED light
- 4-way foot switch
- Dentist and assistant stool
- **Luxury color collection**
- Extended 8 years warranty parts, 1 year labor & parts



# Comfortek X1

## Comfortek X1 Configurations

√: Included o: Optional Configurations

	Expert	Master
<b>CHAIR</b>		
SOFT-MOTION movements	√	√
4-way foot switch	√	√
Backrest Collision Protection	√	√
Legrest Anti-Collision	√	√
M6 Electric Motor System (Lifting capacity up to 485lbs)	√	√
Left Armrest	√	√
Right Armrest	√	√
<b>CONTROL PANEL</b>		
Luxury Touch Display Control Panel		√
Premium Assistant Control Panel	√	√
5-way hand control joystick		√
<b>WATER SUPPLY</b>		
Fresh water bottle with Premium switch to public water supply	√	√
<b>FOOT CONTROL</b>		
Disc Foot Pedal with Water ON/OFF Switch	√	√
<b>ASSISTANT ELEMENT</b>		
4 instrument positions	√	√
Saliva ejector and HVE	√	√
Built-In LED curing light	o	o

	Expert	Master
<b>DENTIST ELEMENT</b>		
5 instrument positions	√	√
Height-adjustable with pneumatic brake	√	√
Handpiece fiber-optic system including 6-pin tubings	<input checked="" type="checkbox"/> 1pc <input type="checkbox"/> 2pcs <input type="checkbox"/> 3pcs	<input checked="" type="checkbox"/> 2pcs <input type="checkbox"/> 3pcs
Built-In electric Micromotor	o	√
Built-In LED Scaler	√	√
Auxiliary Instrument Tray table	o	o
<b>MONITOR ARM &amp; MULTIMEDIA SYSTEM</b>		
22" All-in-One PC	o	o
Monitor Arm I (2-joint )	o	o
Monitor Arm III (3-joint extended)	o	o
<b>OPERATING LIGHT</b>		
M7 LED Light	√	√
<b>UPHOLSTERY</b>		
Seamless Upholstery	o	o
Stitched Upholstery	√	√
<b>UPHOLSTERY COLOR</b>		
Premium Collection	√	
Luxury Collection		√
<b>DENTIST STOOL</b>	√	√
<b>ASSISTANT STOOL</b>	√	√

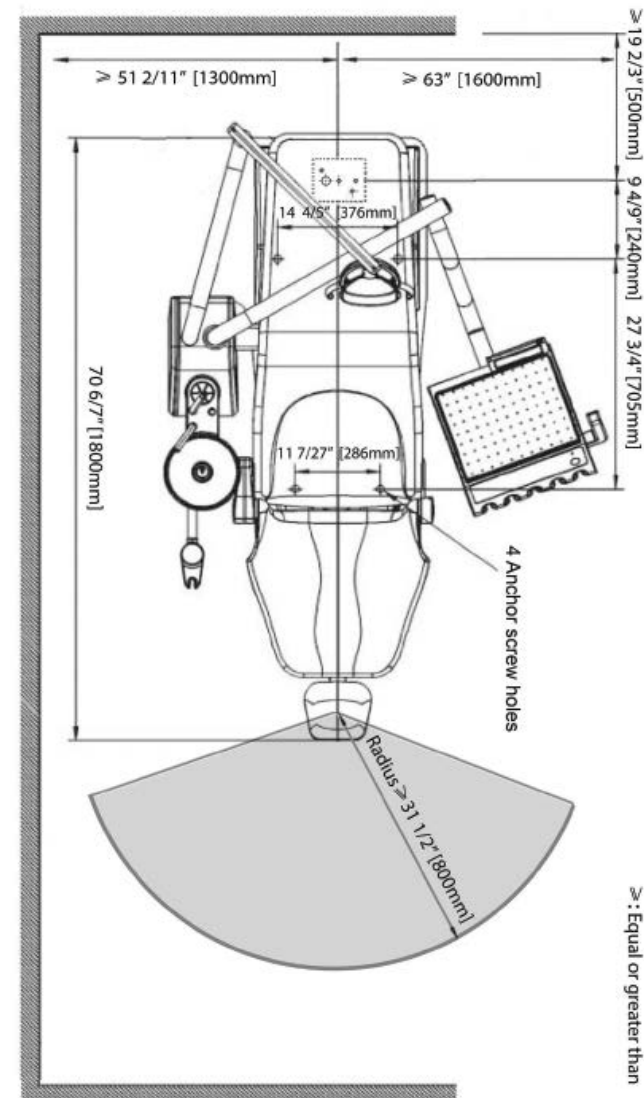
### Technical Specifications

Rated Voltage	110-120V AC / 220-230V AC 60Hz/50Hz
Water Pressure	0.2-0.4 MPa / 2.0-4.0 bar
Water Flow*	≥5 L/min
Air Pressure	0.60-0.80 MPa / 6.0-8.0 bar
Air Consumption*	80 L/min
Suction machine	≥255 L/min (with central suction)
Load capacity of patient's chair	Maximum 485lbs
Moving range of patient's chair	380-780 mm

### Color



### Space Requirements





The Next Standard

Beyes is the largest Canadian dental handpiece manufacturer with its corporate office located in Toronto. By taking advantage of the highly educated workforce and well-established manufacturing chain in Southern Ontario, Beyes has revolutionized the dental industry with groundbreaking advancements for precision dental instrumentations.

Our Vision: To create "The Next Standard" for dentistry.

### Comprehensive Product Portfolio



Treatment Centers



Electric Motor



X-Ray Sensor



LED High Speed Handpieces

**Beyes Dental Inc.**  
55 Laurier Drive  
Morrisburg, ON K0C 1X0,  
Canada

**Beyes USA Inc.**  
1116 Champlain St  
Ogdensburg, NY 13669,  
USA

**Customer Service/Technical Support**  
Tel: 1-855-603-1888  
Fax: 1-855-720-1228  
Email: info@beyes.ca  
Website: www.beyesdental.com



**Lotus NL B.V.**  
Koningin Julianaplein 10, le Verd,  
2595AA, The Hague,  
Netherlands  
Email: info@lotusnl.com

**Your Dealer for Beyes Products**



Scan the QR code  
for more information

Printed in Canada  
File #: ENB060  
Rev.4/01.05.26

© Beyes Dental Inc 2025. All Rights Reserved.  
Specifications are subject to change without notice.  
All brands are holders of their respective trademarks.  
All Beyes products are manufactured in strict compliance  
with Health Canada regulations ensuring quality.  
Manufacturing facility is ISO 13485 certified under the  
Medical Device Single Audit Program (MDSAP).